

Windows 7



Windows 7

Eduroam
Wireless Connection



For use by: Students, employees and guests
Version: 0.2
Date: 03-15-2013
Owner: @Hok / SSC ICT

(this page was intentionally left blank)

Connecting wireless to the 'eduroam' network on Windows 7

Before you begin

The following instruction is supported by the TU Delft and has been tested to be working. However, we offer this manual to you as an extra service. So in case you have a configuration or version of Windows 7 other than the one described here and you have problems establishing a connection, neither ICT nor a Servicepoint will be able to help you to make a successful connection. If you have a windows version older than Windows 7 we strongly advise you to install a newer version of windows due to Microsoft support discontinuity for versions older than Windows 7.

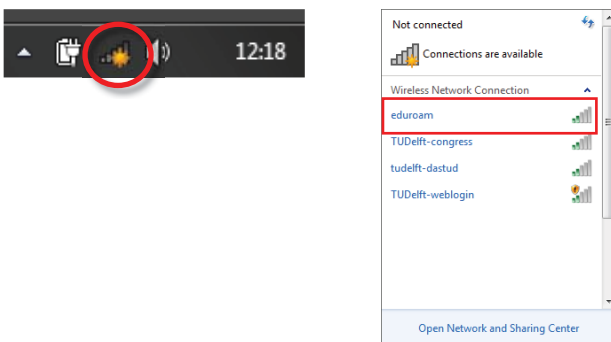
Prerequisites

In order to make a successful connection, make sure that all your wireless hardware is installed, switched on and managed by Windows and that you have the latest updates for Windows installed.

Wireless profile installation

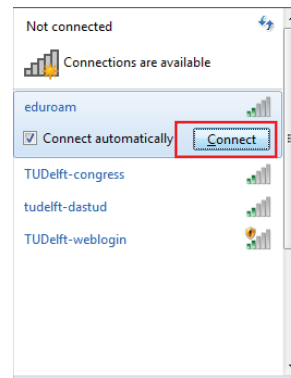
Step 1

Click the **wireless network icon** in your system tray. A window will pop-up showing the networks that are currently available.



Step 2

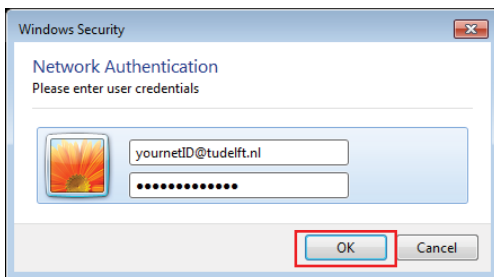
Click on **eduroam**. Then click **Connect**. A authentication dialog will appear.



Step 3

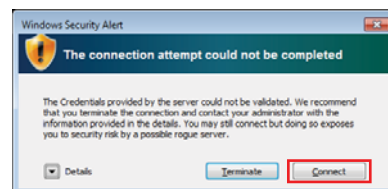
For both students and employees, enter your **netid@tudelft.nl** and your **netid password**. *This may look like your email adress but it is not.

Click OK. A certificate dialog will appear.



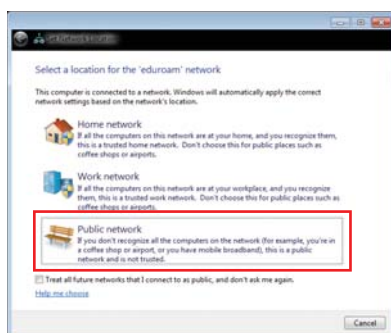
Step 4

Windows will probably warn you to accept the security certificates. Click on **Connect**.



Step 5

You'll probably be prompted to set a location for this network. **Public network** is recommended.



Step 6

You are now connected to the eduroam network!



Step 1

Click the **wireless network icon** in your system tray.



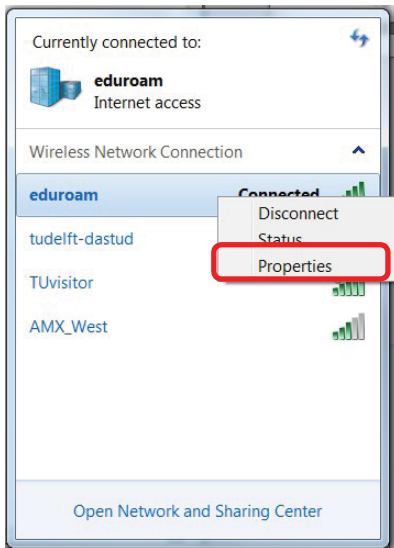
Step 2

Right click on the **eduroam** connection.



Step 3

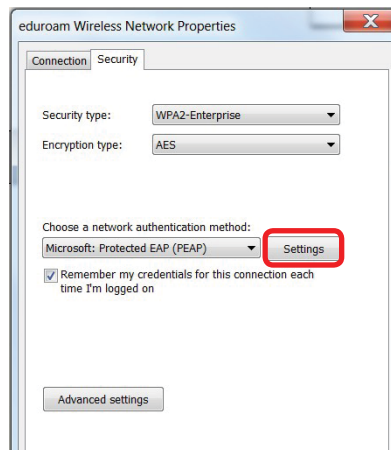
Click on **properties**.



Step 4

Make sure the **Security type** is **WPA2-Enterprise**; The **Encryption type** is **AES**; The **authentication method** is **Microsoft: Protected EAP (PEAP)**.

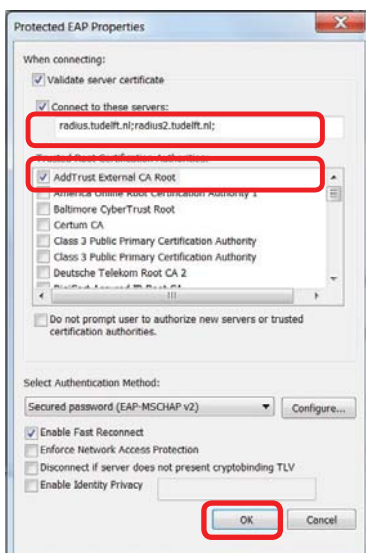
Click on **settings**.



Step 4

Make sure the Radius Server is either **radius.tudelft.nl** or **radius2.tudelft.nl**.

Click OK.



Step 5

If the information is correct the Eduroam network has been installed correctly on your laptop.

Click OK

