

Delft3D

Delft3D

Delft3D installation guide

For use by:	Students, Employees
Version:	1.0
Date:	11-03-2017
Owner:	@Hok /ICT

(this page was intentionally left blank)

Delft3D installation guide

Before you begin

The following instructions are supported by TU Delft and have been tested to be working. We are offering this manual to you as an extra service. In the event you have a different configuration or version of WINDOWS 10 to the one described here and you have problems connecting, we advise you to contact your nearest Service Desk, Student IT Desk (SID) or Workstation services (WPS).

Follow all the steps carefully!

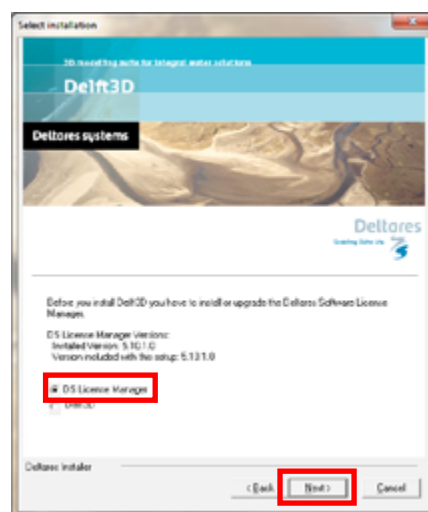
Step 1. Install MCRInstaller.exe by just keep clicking next and finish installation.

Make sure to run it as administrator (right click file, run as administrator)

Step 2. run setup.delft3d.hydro_morpho_waq.exe.

Make sure to run it as administrator (right click file, run as administrator)

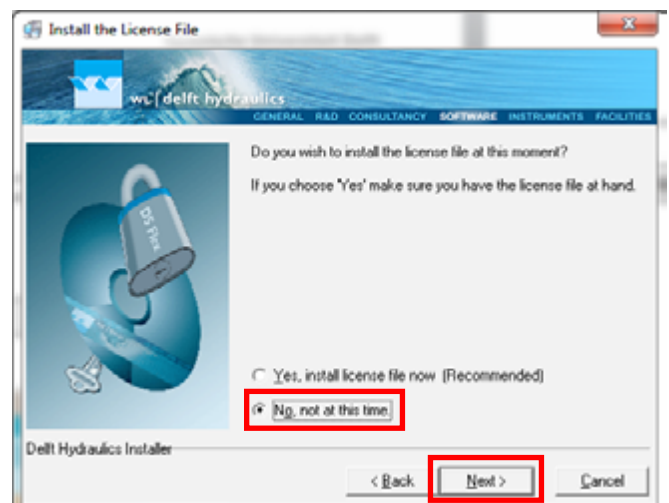
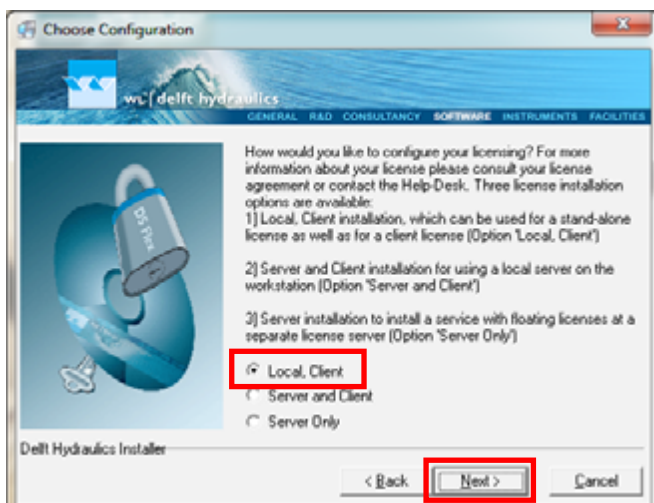
Select DS License Manager, click Next.



Step 3. Select Local, client

Step 4. Select No, not at this time.

At this point the installation may say that windows 10 is not supported, just click 'Ok I take the risk' and continue the installation. If an error pops up with 'OS not supported', click ok and continue. This error message should not be a problem at the end and the program will work fine.



Follow all the steps carefully!

Step 5. After the previous installation is done, it should automatically select Delft3D. Click next and finish the installation.

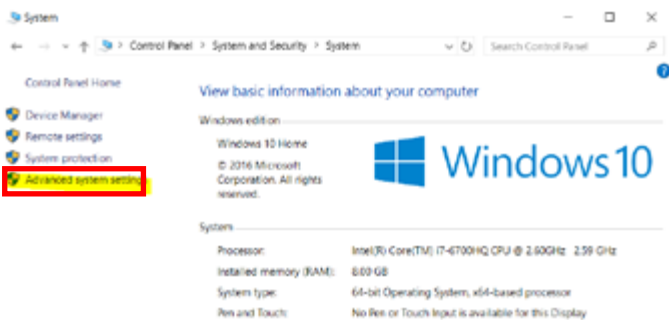


Step 6. Install setup.delft3d.tutorial.exe, normal installation procedure (Keep clicking next and finish installation).

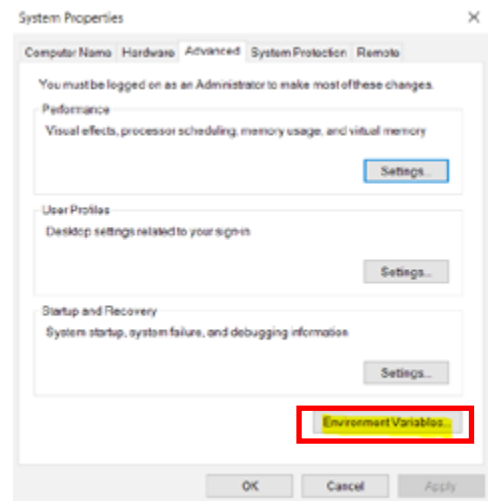
Make sure to run it as administrator (right click file, run as administrator)

Step 7. To install the license, 5. Go to control panel > System and security > System.

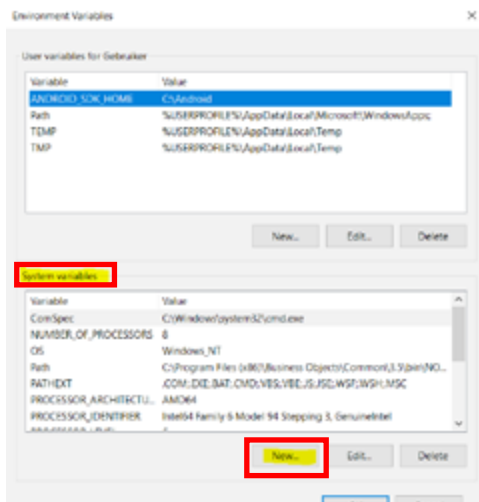
Click on Advanced system settings.



Step 8. Click on environment variables.



Step 9. To create a new System variable click new. Two new variables need to be created, see next step.



Step 10. Add the following 2 variable names and values in 2 separate windows and click OK.

DHSDLEFT_LICENSE_FILE = 29035@flexserv11.tudelft.nl
DWLDELFT_LICENSE_FILE = 29035@flexserv11.tudelft.nl

