

WEBDRIVE



Webdrive

Password change



For use by:	Students, Employees
Version:	1.0
Date:	19-08-2015
Owner:	@Hok /SSC ICT

(this page was intentionally left blank)

Change your Webdrive password

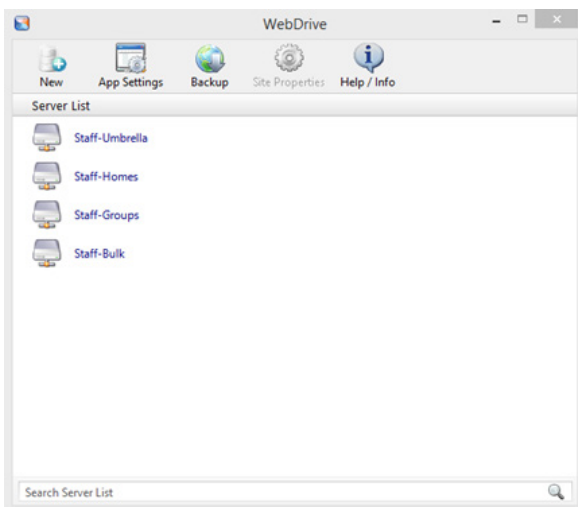
Before you begin

The following instruction is supported by the TU Delft and has been tested to be working. However, we offer this manual to you as an extra service. In case you have a configuration or version of **OPERATING SYSTEM** other than the one described here and you have problems **DESCRIBE PROBLEM**, neither ICT nor a Servicepoint will be able to help you to **DESCRIBE PROBLEM**.

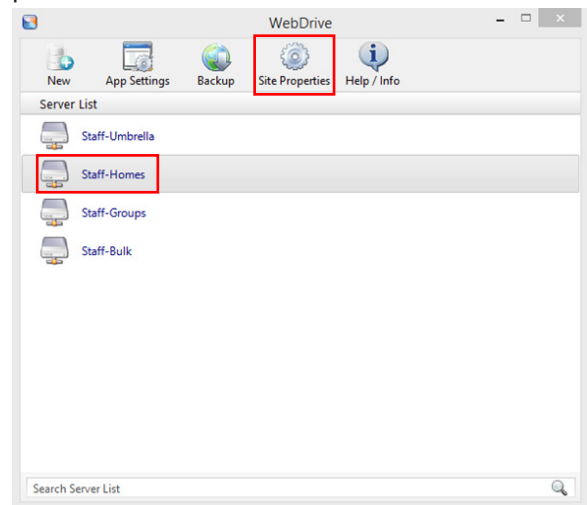
If you have installed Webdrive and the square is ticked with “Save Password” you can also change your password here.

Changing your Webdrive password

Step 1. Start Webdrive.



Step 2. In this example, we change the password of “Staff-Homes”. Click on “Staff-Homes” and then “Site Properties”.



Step 3. In this screen you can change your password, do this for all drives.

The advice is **not** to check the “Save Password”. In this way you will always fill in the proper password. But you are free to choose to do so.

