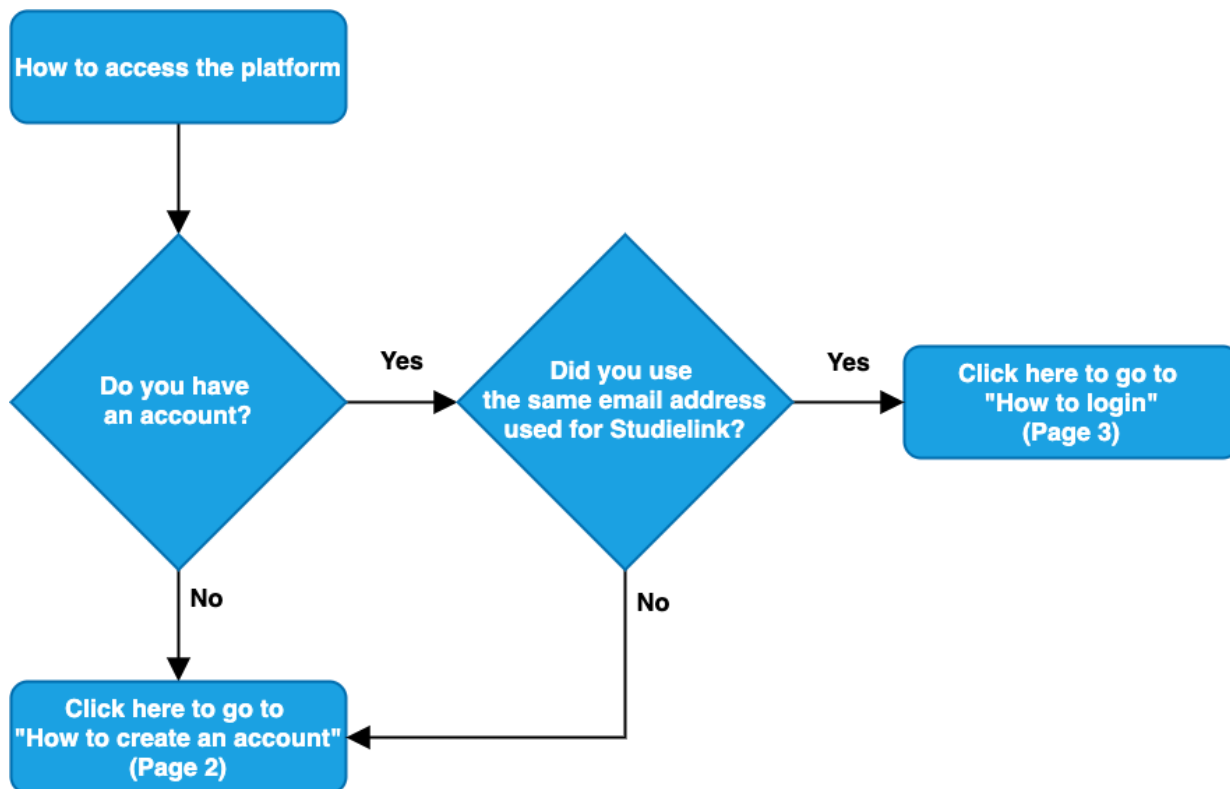


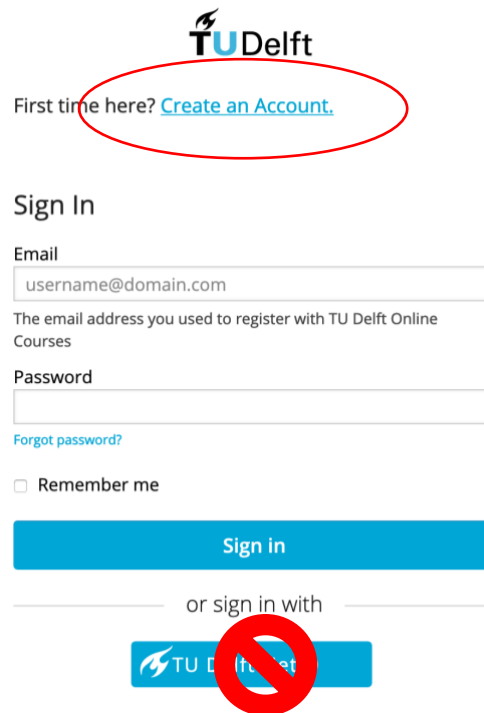
## How to access the TU Delft Online Courses platform?

1. Please follow this flowchart to access the TU Delft Online Courses platform correctly.



## How to create an account

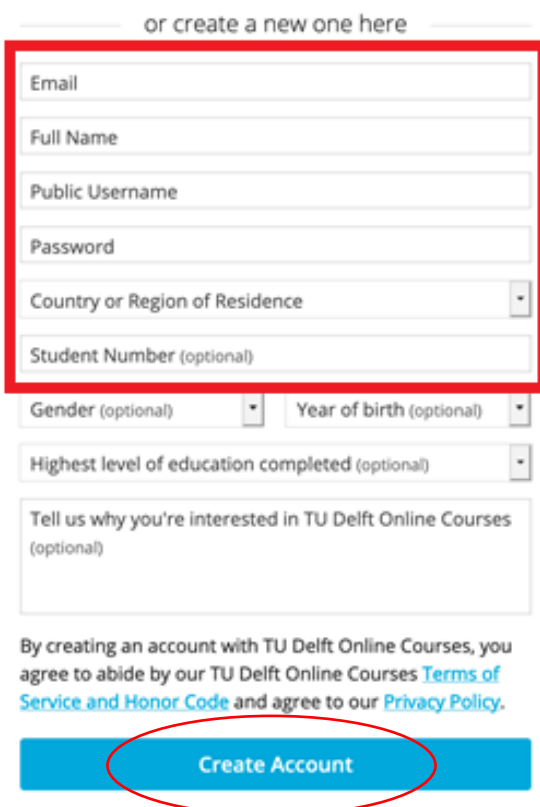
- Go to the TU Delft Online Courses environment (<https://onlinecourses.tudelft.nl/>).
- You will see the following login screen. Click on “Create an Account”.



The image shows the TU Delft login page. At the top is the TU Delft logo. Below it, the text "First time here? [Create an Account.](#)" is circled in red. Underneath is the "Sign In" section with an "Email" field containing "username@domain.com", a "Password" field, and a "Remember me" checkbox. A blue "Sign in" button is present. Below the button, the text "or sign in with" is followed by a TU Delft NetID icon, which is crossed out with a red circle and slash.

**Note:** Do not use the option to login with your TU Delft NetID.

- You will see the following screen.



The image shows the account creation page. At the top, the text "or create a new one here" is centered. Below it is a form with several fields: "Email", "Full Name", "Public Username", "Password", "Country or Region of Residence" (dropdown), "Student Number (optional)", "Gender (optional)" (dropdown), "Year of birth (optional)" (dropdown), "Highest level of education completed (optional)" (dropdown), and "Tell us why you're interested in TU Delft Online Courses (optional)". A blue "Create Account" button is at the bottom, circled in red.

Please complete *all* fields in the red box:

- Email (use your Studielink address!)
- Full Name
- Public Username (see instructions below)
- Password
- Country or Region of Residence
- TU Delft Student Number (**required!**)

### Important:

Your “Public Username” should be: Initials\_Last name (e.g. JA\_Smith). Usernames can only contain letters (a-z), numbers and underscore (\_). Do *not* use any accents (e.g. ç, ö, ś) or special characters.

If your username already exists add a number behind your last name.

- Click on “Create Account”.

5. You will receive an email with instructions how to activate your account on the email address you entered when creating your account.

**Note:** Please don't forget to check your spam folder. If you didn't receive the activation email after 24 hours or you have problems creating or activating your account contact [edX-TLS@tudelft.nl](mailto:edX-TLS@tudelft.nl).

6. After activation of your account, you will find your course(s) on your dashboard (<https://onlinecourses.tudelft.nl/dashboard>) underneath "My Courses".

Click on the course to open it.

**Note:** Next time you will enter the platform directly after signing in with the account you created. Make sure to remember the **email address and password** you used.

## How to login

7. Go to the TU Delft Online Courses environment (<https://onlinecourses.tudelft.nl/>). Here you will see the following login screen.

First time here? [Create an Account](#).

### Sign In

Email  
username@domain.com  
The email address you used to register with TU Delft Online Courses

Password  
[Forgot password?](#)

Remember me

[Sign in](#)

or sign in with

[TU Delft NetID](#)

8. Enter your email address and password and click on "Sign in".

**Note:** To reset your password please click on "Forgot password?" and enter your email address that you used creating your account.

**Note:** Do **not** use the TU Delft NetID option to sign in! This will connect the wrong email address ('username@student.tudelft.nl') to your account. You will not be able to see or enter the online selection platform.

9. You will find your course(s) on your dashboard (<https://onlinecourses.tudelft.nl/dashboard>) underneath "My Courses". Click on the course to open it.