

REPORT Open Access TU Delft 2021

Date: 28-4-2021

TU Delft Library - Research Support / Team Analytics

This document reports on the results of the analysis of the Open Access (OA) figures for 2021 for TU Delft.

It consists of three parts. In the first part, the main results are reported. Next, an explanation on the use and content of the accompanying Excel report is given. Finally, the methodology and steps of the analysis are described.

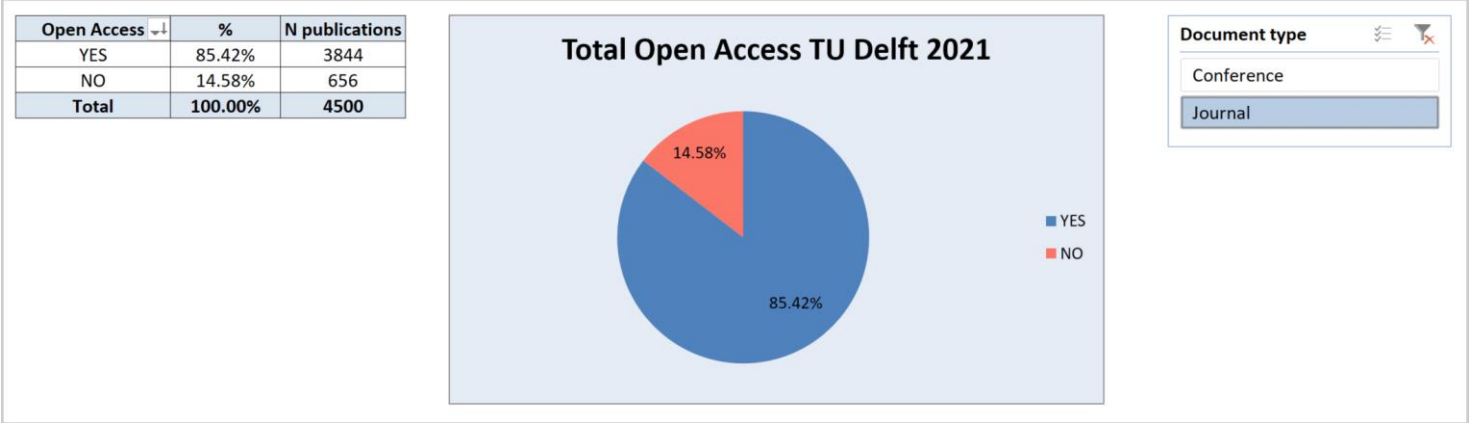
1 MAIN RESULTS

In this chapter the main results are reported.

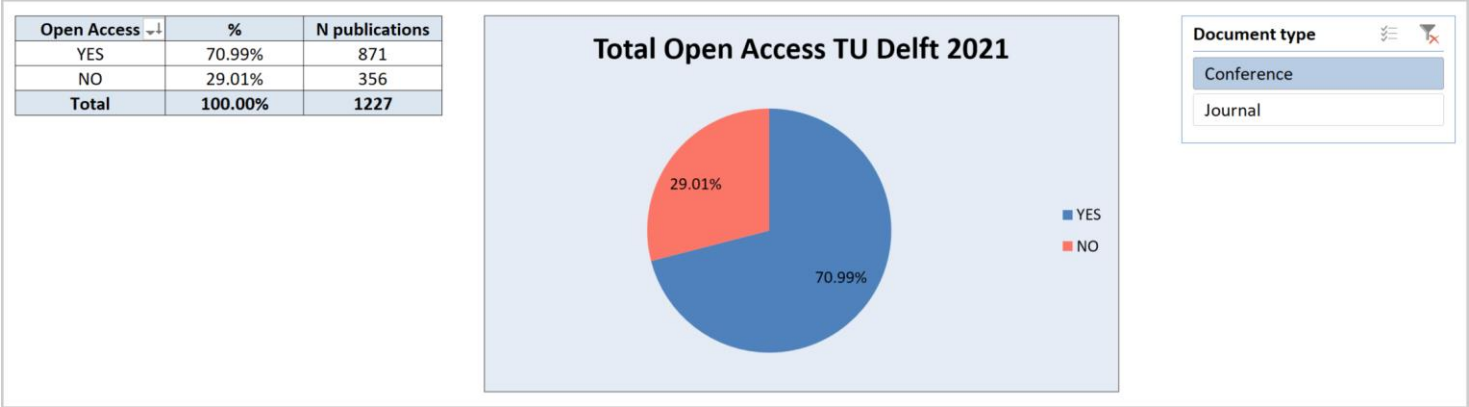
It should be noted that the figures reported here are based on an export from Pure on April 6th, 2022 and that publications have been checked for their Open Access status using several sources and specific criteria (see Chapter 3: methodology).

Some publications that were found to be non-Open Access at the time of this analysis still will become Open Access later on, e.g. after an embargo date has expired. And publications that had neither a valid ISSN nor a valid DOI might end up being classified as non-Open Access even though they actually could be Open Access. The figures and percentages presented in this report should therefore be considered as the minimum Open Access for TU Delft for 2021.

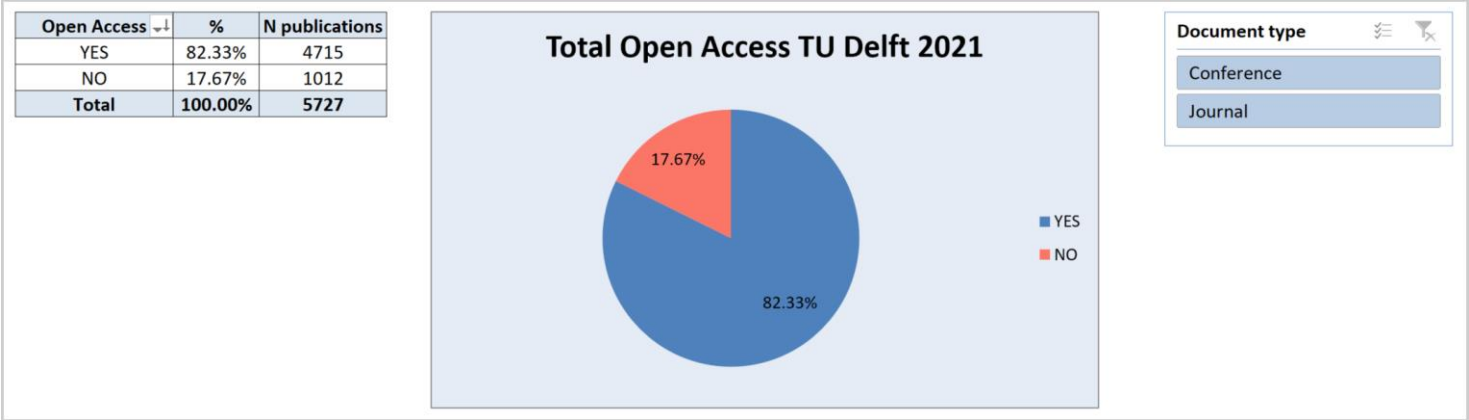
1.1 OA TU Delft Total: Journal articles



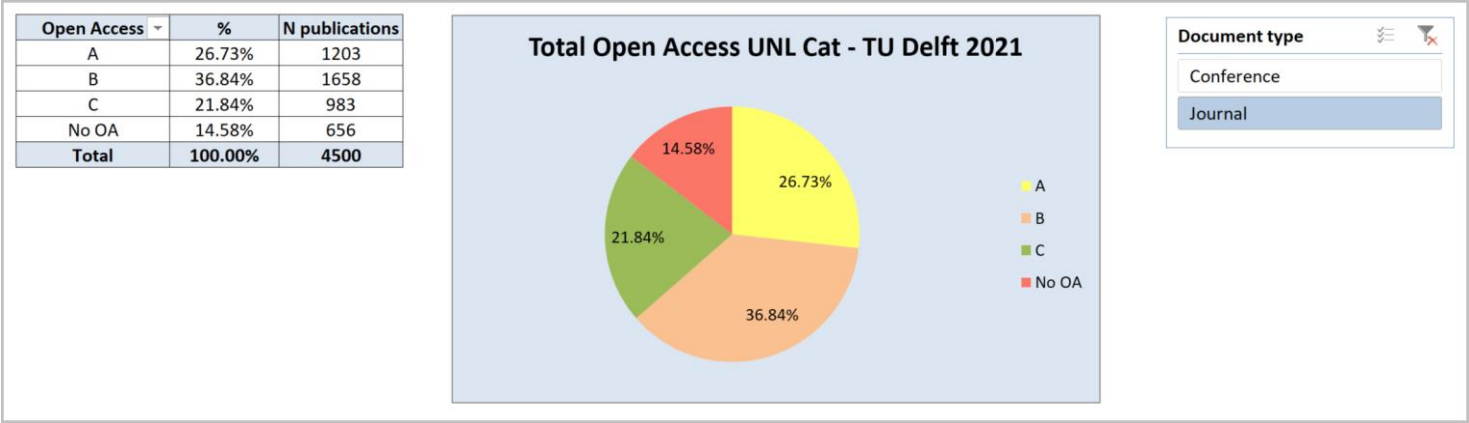
1.2 OA TU Delft Total: Conference proceedings



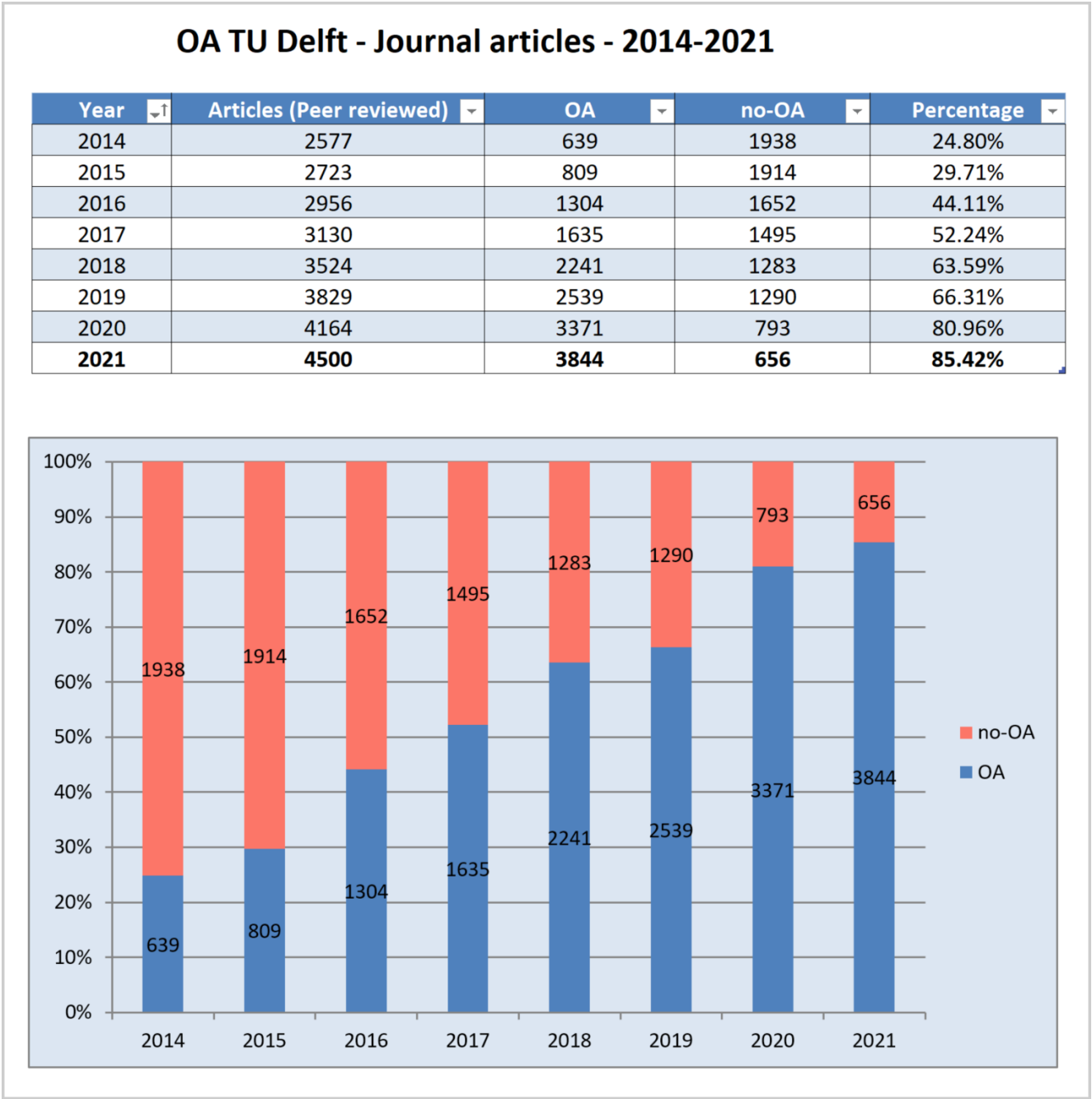
1.3 OA TU Delft Total: Journal articles AND Conference proceedings



1.4 OA TU Delft UNL Categories Total: Journal articles



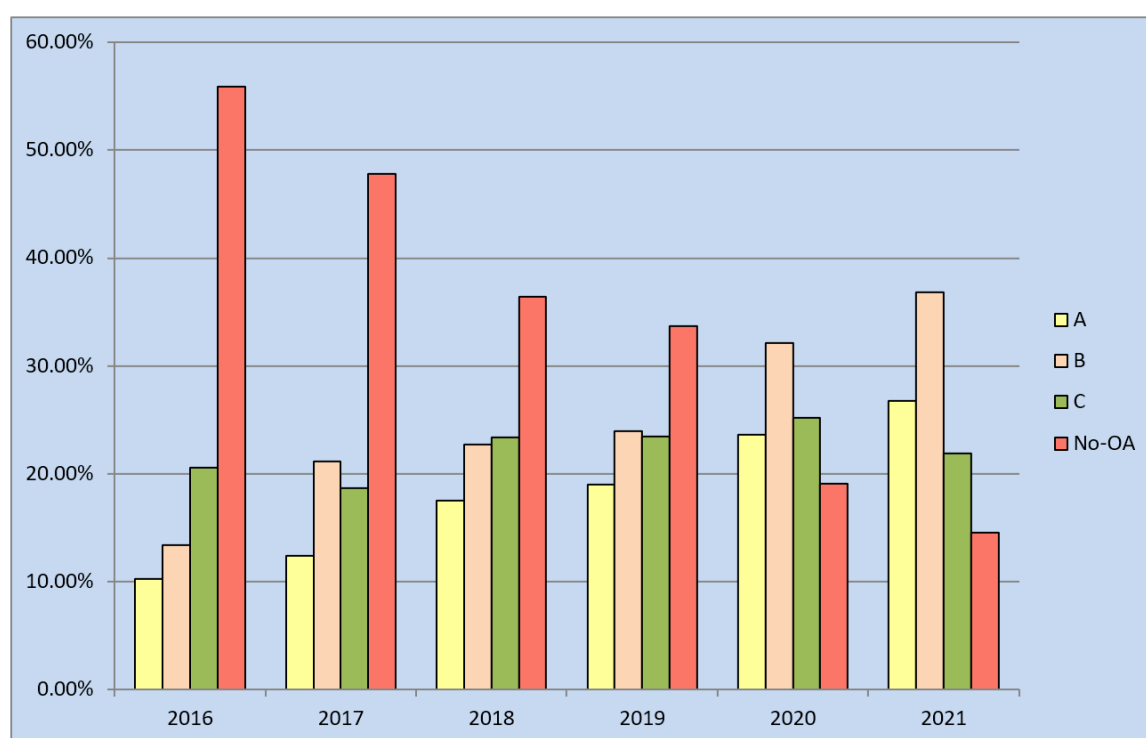
1.5 OA TU Delft Journal articles 2014-2021



OA TU Delft - Journal articles - 2016-2021 - UNL Categories

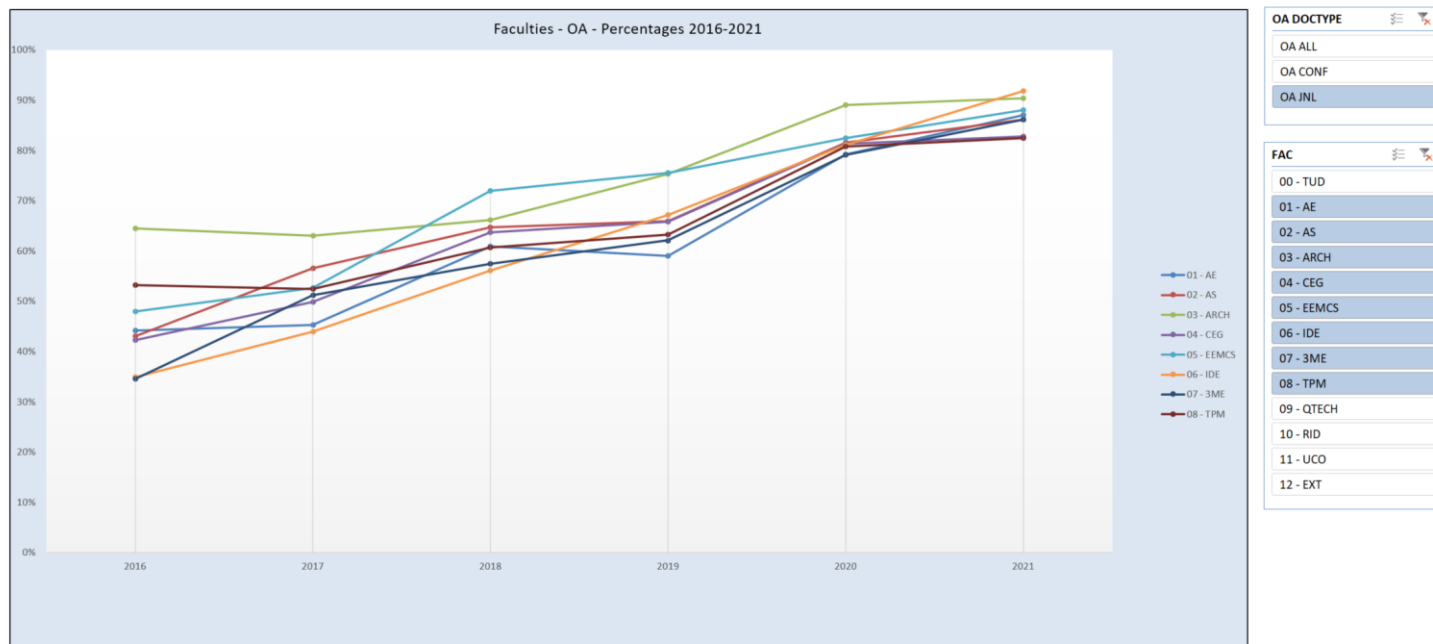
Year	A	B	C	No-OA	Total
2016	302	395	607	1652	2956
2017	389	662	584	1495	3130
2018	616	800	825	1283	3524
2019	726	916	897	1290	3829
2020	983	1339	1049	793	4164
2021	1203	1658	983	656	4500

Year	A	B	C	No-OA	Total
2016	10.22%	13.36%	20.53%	55.89%	2956
2017	12.43%	21.15%	18.66%	47.76%	3130
2018	17.48%	22.70%	23.41%	36.41%	3524
2019	18.96%	23.92%	23.43%	33.69%	3829
2020	23.61%	32.16%	25.19%	19.04%	4164
2021	26.73%	36.84%	21.84%	14.58%	4500



1.7.1 OA Faculties: Journal articles - 2016-2021 - Percentages OA

Year	01 - AE	02 - AS	03 - ARCH	04 - CEG	05 - EEMCS	06 - IDE	07 - 3ME	08 - TPM
2016	44%	43%	65%	42%	48%	35%	35%	53%
2017	45%	57%	63%	50%	53%	44%	51%	52%
2018	61%	65%	66%	64%	72%	56%	57%	61%
2019	59%	66%	75%	66%	76%	67%	62%	63%
2020	79%	82%	89%	81%	83%	81%	79%	81%
2021	87%	86%	90%	83%	88%	92%	86%	82%

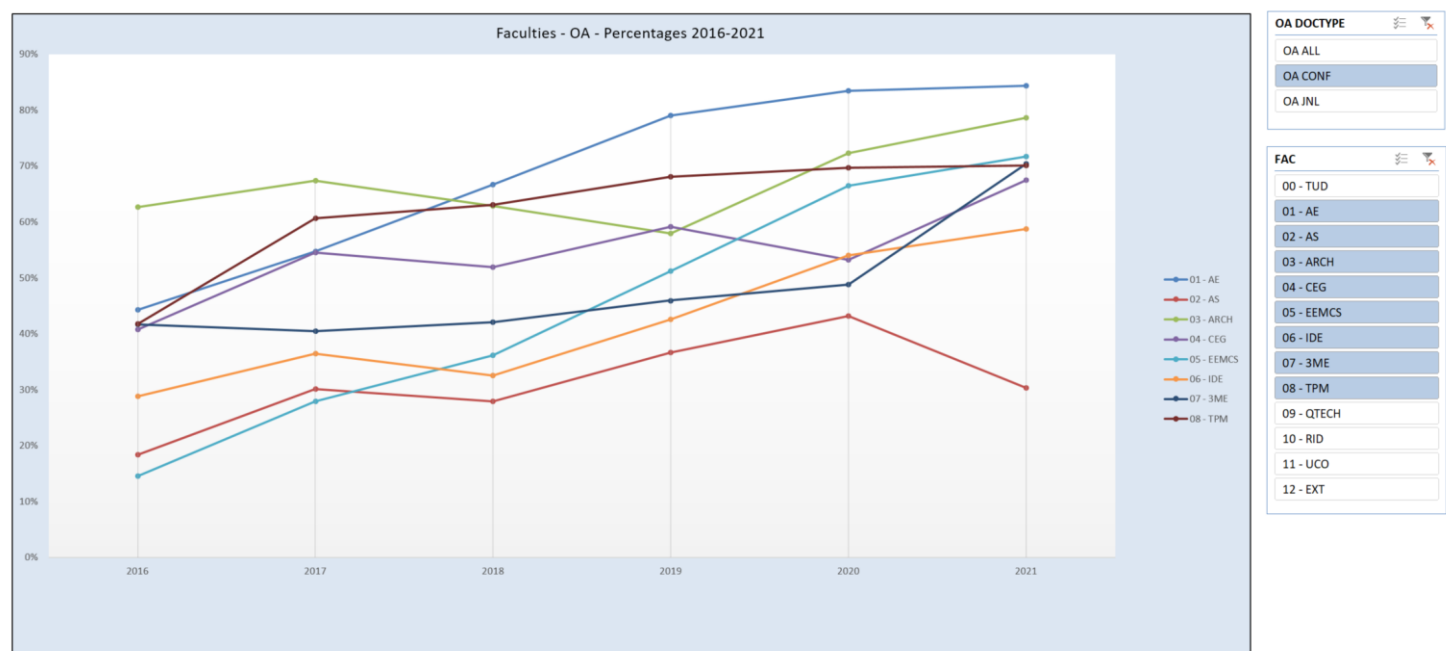


1.7.2 OA Faculties: Journal articles - 2021 - Percentages and number of publications OA

YEAR	OA DOCTYPE	FAC	A %	B %	C %	No OA%	OA Total %	Total %	A	B	C	No OA	OA Total	Total
2021	OA JNL	00 - TUD	26.73%	36.84%	21.84%	14.58%	85.42%	100.00%	1203	1658	983	656	3844	4500
2021	OA JNL	01 - AE	23.35%	40.80%	22.88%	12.97%	87.03%	100.00%	99	173	97	55	369	424
2021	OA JNL	02 - AS	26.50%	40.13%	19.50%	13.88%	86.13%	100.00%	212	321	156	111	689	800
2021	OA JNL	03 - ARCH	40.26%	35.78%	14.38%	9.58%	90.42%	100.00%	126	112	45	30	283	313
2021	OA JNL	04 - CEG	29.00%	35.19%	18.57%	17.24%	82.76%	100.00%	328	398	210	195	936	1131
2021	OA JNL	05 - EEMCS	27.02%	28.69%	32.31%	11.98%	88.02%	100.00%	194	206	232	86	632	718
2021	OA JNL	06 - IDE	34.50%	38.01%	19.30%	8.19%	91.81%	100.00%	59	65	33	14	157	171
2021	OA JNL	07 - 3ME	21.91%	41.53%	22.76%	13.80%	86.20%	100.00%	181	343	188	114	712	826
2021	OA JNL	08 - TPM	21.62%	44.66%	16.15%	17.58%	82.42%	100.00%	91	188	68	74	347	421
2021	OA JNL	09 - QTECH	35.44%	17.72%	41.77%	5.06%	94.94%	100.00%	28	14	33	4	75	79
2021	OA JNL	10 - RID	28.57%	53.57%	10.71%	7.14%	92.86%	100.00%	8	15	3	2	26	28
2021	OA JNL	11 - UCO	37.50%	46.88%	15.63%	0.00%	100.00%	100.00%	12	15	5	0	32	32
2021	OA JNL	12 - EXT	0.00%	0.00%	0.00%	0.00%	0.00%	0.00%	0	0	0	0	0	0

1.8.1 OA Faculties: Conference proceedings - 2016-2021 - Percentages OA

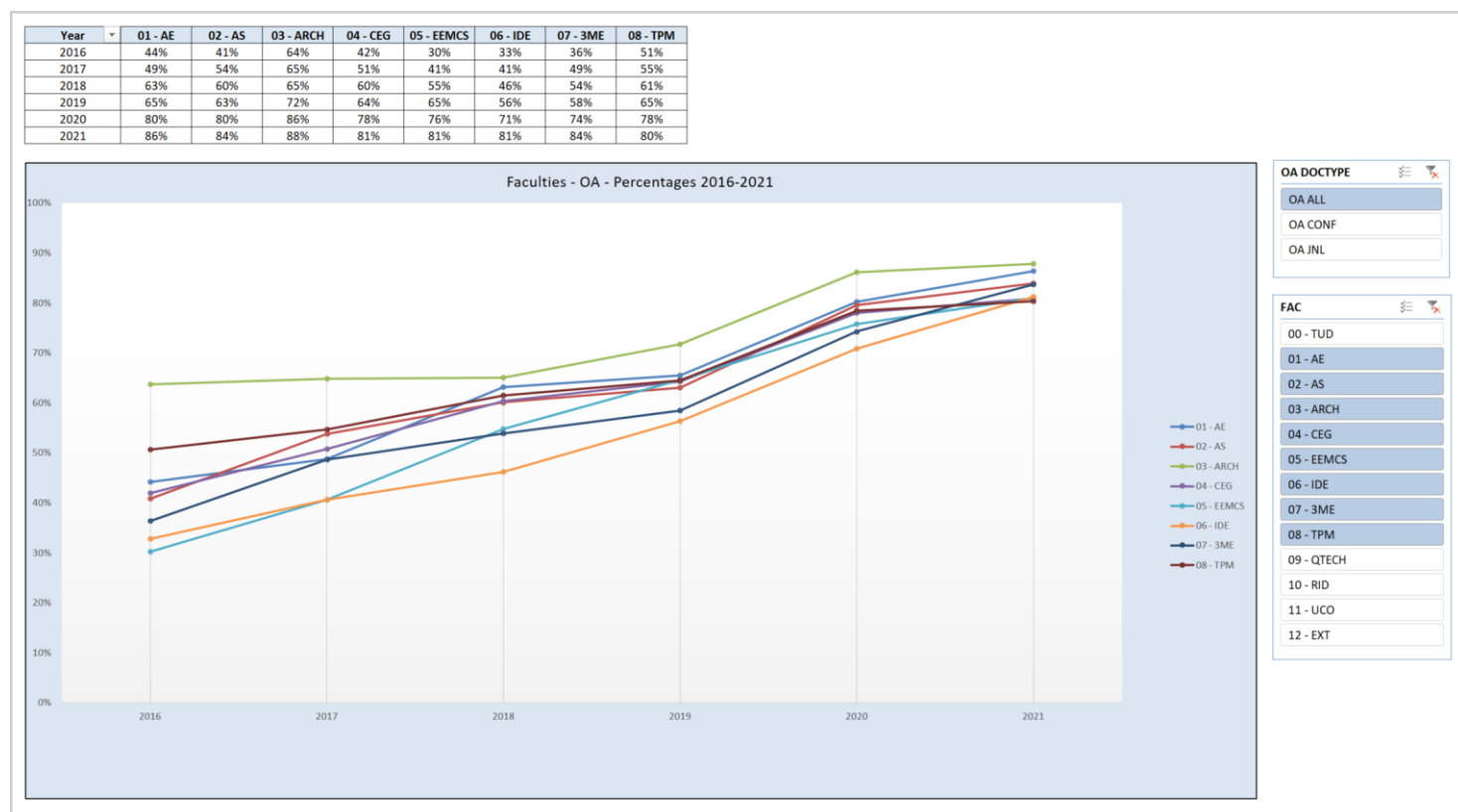
Year	01 - AE	02 - AS	03 - ARCH	04 - CEG	05 - EEMCS	06 - IDE	07 - 3ME	08 - TPM
2016	44%	18%	63%	41%	15%	29%	42%	42%
2017	55%	30%	67%	54%	28%	36%	40%	61%
2018	67%	28%	63%	52%	36%	33%	42%	63%
2019	79%	37%	58%	59%	51%	43%	46%	68%
2020	83%	43%	72%	53%	66%	54%	49%	70%
2021	84%	30%	79%	68%	72%	59%	70%	70%



1.8.2 OA Faculties: Conference proceedings - 2021 - Percentages and number of publications OA

YEAR	OA DOCTYPE	FAC	A %	B %	C %	No OA%	OA Total %	Total %	A	B	C	No OA	OA Total	Total
2021	OA CONF	00 - TUD	0.16%	1.30%	69.52%	29.01%	70.99%	100.00%	2	16	853	356	871	1227
2021	OA CONF	01 - AE	0.00%	0.75%	83.58%	15.67%	84.33%	100.00%	0	1	112	21	113	134
2021	OA CONF	02 - AS	0.00%	0.00%	30.30%	69.70%	30.30%	100.00%	0	0	10	23	10	33
2021	OA CONF	03 - ARCH	0.00%	2.25%	76.40%	21.35%	78.65%	100.00%	0	2	68	19	70	89
2021	OA CONF	04 - CEG	0.63%	0.00%	66.88%	32.50%	67.50%	100.00%	1	0	107	52	108	160
2021	OA CONF	05 - EEMCS	0.19%	1.49%	70.02%	28.31%	71.69%	100.00%	1	8	376	152	385	537
2021	OA CONF	06 - IDE	0.00%	2.50%	56.25%	41.25%	58.75%	100.00%	0	2	45	33	47	80
2021	OA CONF	07 - 3ME	0.00%	1.26%	69.18%	29.56%	70.44%	100.00%	0	2	110	47	112	159
2021	OA CONF	08 - TPM	1.15%	1.15%	67.82%	29.89%	70.11%	100.00%	1	1	59	26	61	87
2021	OA CONF	09 - QTECH	0.00%	11.11%	22.22%	66.67%	33.33%	100.00%	0	1	2	6	3	9
2021	OA CONF	10 - RID	0.00%	0.00%	0.00%	0.00%	0.00%	0.00%	0	0	0	0	0	0
2021	OA CONF	11 - UCO	0.00%	0.00%	45.45%	54.55%	45.45%	100.00%	0	0	5	6	5	11
2021	OA CONF	12 - EXT	0.00%	0.00%	0.00%	0.00%	0.00%	0.00%	0	0	0	0	0	0

1.9.1 OA Faculties: Journal articles AND Conference proceedings - 2016-2021 - Percentages OA



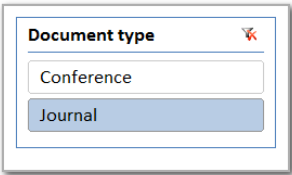
1.9.2 OA Faculties: Journal articles AND Conference proceedings - 2021 - Percentages and number of publications OA

YEAR	OA DOCTYPE	FAC	A %	B %	C %	No OA%	OA Total %	Total %	A	B	C	No OA	OA Total	Total
2021	OA ALL	00 - TUD	21.04%	29.23%	32.06%	17.67%	82.33%	100.00%	1205	1674	1836	1012	4715	5727
2021	OA ALL	01 - AE	17.74%	31.18%	37.46%	13.62%	86.38%	100.00%	99	174	209	76	482	558
2021	OA ALL	02 - AS	25.45%	38.54%	19.93%	16.09%	83.91%	100.00%	212	321	166	134	699	833
2021	OA ALL	03 - ARCH	31.34%	28.36%	28.11%	12.19%	87.81%	100.00%	126	114	113	49	353	402
2021	OA ALL	04 - CEG	25.48%	30.83%	24.55%	19.13%	80.87%	100.00%	329	398	317	247	1044	1291
2021	OA ALL	05 - EEMCS	15.54%	17.05%	48.45%	18.96%	81.04%	100.00%	195	214	608	238	1017	1255
2021	OA ALL	06 - IDE	23.51%	26.69%	31.08%	18.73%	81.27%	100.00%	59	67	78	47	204	251
2021	OA ALL	07 - 3ME	18.38%	35.03%	30.25%	16.35%	83.65%	100.00%	181	345	298	161	824	985
2021	OA ALL	08 - TPM	18.11%	37.20%	25.00%	19.69%	80.31%	100.00%	92	189	127	100	408	508
2021	OA ALL	09 - QTECH	31.82%	17.05%	39.77%	11.36%	88.64%	100.00%	28	15	35	10	78	88
2021	OA ALL	10 - RID	28.57%	53.57%	10.71%	7.14%	92.86%	100.00%	8	15	3	2	26	28
2021	OA ALL	11 - UCO	27.91%	34.88%	23.26%	13.95%	86.05%	100.00%	12	15	10	6	37	43
2021	OA ALL	12 - EXT	0.00%	0.00%	0.00%	0.00%	0.00%	0.00%	0	0	0	0	0	0

2 Explanation on use and content of the Excel report

2.1 General information

A number of sheets contain reports that have been filtered using so called slicers. Example:

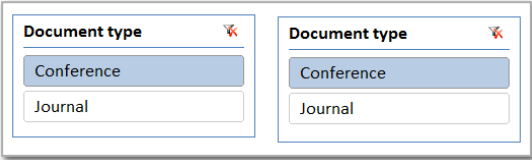
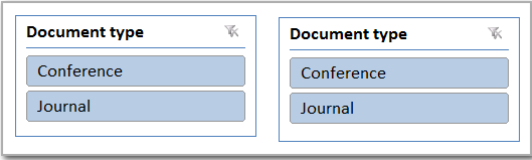
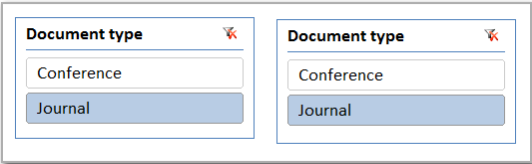


Default filtering is on Journals. In all results sheets you can use these slicers to make another selection. For example, in sheet **1 - OA TU Delft Total** you can either select Conference proceedings, Journals, or all publications. Click on Conference or Journal to make a choice or hold CTRL and click on both items to select Journal as well as Conference.

Important!

Slicers are always shown twice. This in order to make it possible to simultaneously show numbers and percentages. When you toggle slicers make sure you **ALWAYS USE BOTH** equally named slicers and that your filter selections for these slicers are exactly the same!

Examples:



In a number of results sheets you will also find (filtered) tabulated OA results for all faculties, including UNL OA Categories:

OA JOURNAL						
FAC	A	B	C	No OA	OA Tot	Total
00 - TUD	1203	1658	983	656	3844	4500
01 - AE	173	97	55	369	424	
02 - AS	212		111	689	800	
03 - ARCH	126		30	283	313	
04 - CEG	328		195	936	1131	
05 - EEMCS	194		86	632	718	
06 - IDE	59	65	33	14	157	171
07 - 3ME	181	343	188	114	712	826
08 - TPM	91	188	68	74	347	421
09 - QTECH	28	14	33	4	75	79
10 - RID	8	15	3	2	26	28
11 - UCO	12	15	5	0	32	32
12 - EXT	0	0	0	0	0	0

2.1 Description of sheets

Sheet 0 - Output Pure TU Delft 2021

Pure export data: peer reviewed journal articles and peer reviewed conference proceedings.

This sheet includes all collected (matching) information and results and is the basis for OA reporting in the subsequent sheets.

Sheet 0 - Field descriptions

Column(s)	Name	Explanation
A	empty	Intentionally blank
B	Match_with_custom_entity	Hidden - contains formulas for custom entity reports
C	Custom_entity_OA_Y/N	Hidden - contains formulas for custom entity reports
D	Source	Source identifier: source name, publication year and serial number, e.g. Pure_2021_0001
E	UUID	Pure UUID (unique record identifier)
F	TUD-ALL	Is a TU Delft publication (always YES)
G-R	01 - AE, 02 - AS etc.	Publication has at least one author from this faculty (YES/NO)
S	CAT ALL	Identified UNL (former VSNU) Category (A, B, C or No OA)
T	OA	Identified as Open Access (YES/NO)
U	Document type	Document type classification (Journal or Conference)
V	Document type (Pure)	Original Pure document type classification
W	1 - DOAJ - A	Identified as OA, UNL Category A, using the Directory of Open Access (DOAJ) (YES/NO)
X	2 - Adm Hybrid - B	Identified as TU Delft OA, UNL Category B using the Dutch national administration of OA publications in subscription journals (YES/NO)
Y	3 - UPW - B	Identified as OA, UNL Category B, using the Unpaywall (UPW) service (YES/NO)
Z	4 - OA Fund TU Delft	Identified as OA, UNL Category B: publications for which the Article Processing Charges (APCs) have been paid using the TU Delft Open Access Fund
AA	5 - UPW - C	Identified as OA, UNL Category C, using the Unpaywall (UPW) service (YES/NO)
AB	6 - Repository - C	Identified as OA, UNL Category C, by matching repository publications with the set of Pure publications (YES/NO)
AC	7 - Taverne - no embargo	Identified as OA, UNL Category C: in accordance with the Taverne Amendment, and with the explicit consent of an author, a publishers' version has been made available through the TU Delft Repository: on 1-5-2022 the embargo period of 6 months has expired (YES/NO)
AD	8 - OA Pure - C	Identified as OA, UNL Category C, after manual check on remaining publications having Pure OA status Open but previously NOT verified as OA
AE	Romeo colour	Hidden - unvalidatable content - Sherpa Romeo colour for identified journals: gave information on the archiving policy of a publisher, e.g. if a peer-reviewed, post-print version can be made available in a repository. Note: Romeo colours have been retired in 2020
AF	Surf Admin Publisher	Publisher names of publications from the Dutch national administration of OA publications in subscription journals
AG	ISSNs Pure	Original ISSNs from Pure fields: Journal ISSN, Series ISSN electronic, Series ISSN print. Note: 0000-0000 if no value in field(s)
AH	ISSN-L	ISSN-L: the preferred ISSN for a publication according to ISSN.org
AI	Journal title	Original journal title from Pure
AJ	OA status Pure	Open Access status as found in Pure on 6-4-2022
AK	DOI - clean	Cleaned and/or corrected DOIs
AL	DOI	Original DOIs from Pure
AM	Title	Main title from Pure
AN	Subtitle	Subtitle from Pure
AO	Reference (APA)	Reference in APA format: contains basic bibliographic data of a Pure publication
AP	Managing organisational unit	Name of managing organisational unit in Pure

AQ	Org units - Ids (Au)	Author organisation IDs
AR	Potential OA	Hidden - unvalidatable content - Romeo colours have been retired in 2020. Identification based on the SHERPA/RoMEO colour. If Green or Blue then a publication could have actually been deposited in a trusted repository and thus could have been at least OA UNL Category C. This column contains the value YES if a publication is identified as actually OA or when a publication might have been OA (identified colour Green or Blue)
AS	IS OA UPW	Is Open Access according to Unpaywall (UPW) (YES/NO)
AT	UPW OA type	Open Access colour derived from data received from Unpaywall (UPW)
AU	TU Delft OA Fund	Publications for which the Article Processing Charges (APCs) have been paid using the TU Delft Open Access Fund
AV	Taverne no embargo on 1-5-2022	In accordance with the Taverne Amendment, and with the explicit consent of an author, a publishers' version has been made available through the TU Delft Repository: on 1-5-2022 the embargo period of 6 months has expired (YES/NO)
AW	Taverne	In accordance with the Taverne Amendment, and with the explicit consent of an author, a publishers' version has been made available through the TU Delft Repository
AX	Taverne Embargo Date	Taverne Embargo Date as found in Pure
AY	Surf OA Admin	Open Access publications in subscription journals that have been made Open Access as a results of agreements of Dutch university libraries with publishers. Information was collected using the Surf administration
AZ	UPW Journal Name	Journal name as identified using Unpaywall (UPW)
BA	Manual check is OA	Final manual check on OA status of publications with Pure status OA = Open that were still not assigned to an Open Access category A, B, or C at the end of the previous "batch" matching steps
BB	DOAJ Title match only	A publication was identified as Gold (Category A) after matching and verifying journal titles from Pure with the 'frozen' DOAJ list of 31-12-2021, but was not previously identified using ISSNs for matching
BC	Multiple DOIs	A record has multiple DOIs. Note: this is only the case for a limited number of records. In most cases the first DOI is kept for further matching and all other DOIs discarded
BD	Duplicate DOIs	Multiple records have the same DOI. Note: no duplicate DOIs were found for the 2021 analysis

0 - FAC data 2016-2021

Data table with Open Access percentages and number of publications for all faculties for the period 2016-2021.

Sheet 1 - OA TU Delft Total

Total Open Access for TU Delft 2021.

Sheet 2 - OA TU Delft Total UNL Cat

Total Open Access for TU Delft 2021 specified according to UNL Categories (A, B, C, or No OA).

Sheet 3 - OA Journal art. 2014-2021

Open access statistics and trend for the period 2014-2021 for TU Delft.

Sheet 4 - OA UNL CAT TUD 2016-2021

Open access statistics and trend for the period 2016-2021* for TU Delft specified according to UNL Categories (A, B, C, or No OA).

* No prior data is available: the UNL/VSNU Framework formalizing guidelines on category classification was made public in April 2017, and used for the first time for the analysis of publications from 2016.

Sheet 5 - FAC OA % 2016-2021

Open Access percentages for the period 2016-2021 for all faculties.

Sheet 6 - FAC OA N pub 2016-2021

Number of Open Access publications for the period 2016-2021 for all faculties.

Sheet 7 - FAC No OA % 2016-2021

Non-Open Access percentages for the period 2016-2021 for all faculties.

Sheet 8 - FAC No OA N pub 2016-2021

Number of Non-Open Access publications for the period 2016-2021 for all faculties.

Sheet 9 - FAC Gold % 2016-2021

Gold Open Access percentages for the period 2016-2021 for all faculties.

Sheet 10 - FAC Gold N pub 2016-2021

Number of Gold Open Access publications for the period 2016-2021 for all faculties.

Sheet 11 - FAC Hybrid % 2016-2021

Hybrid Open Access percentages for the period 2016-2021 for all faculties.

Sheet 12 - FAC Hybrid N pub 2016-2021

Number of Hybrid Open Access publications for the period 2016-2021 for all faculties.

Sheet 13 - FAC Green % 2016-2021

Green Open Access percentages for the period 2016-2021 for all faculties.

Sheet 14 - FAC Green N pub 2016-2021

Number of Green Open Access publications for the period 2016-2021 for all faculties.

Sheets 01-12 - Faculty name - OA YES-NO

Open Access 2021 figures for a specific faculty.

Note: Sheet 12 - EXT has been hidden since there were no publications assigned in 2021 to this entity.

Sheets 01-12 - Faculty name - OA CAT UNL

Open Access 2021 figures for a specific faculty specified according to UNL Categories (A, B, C, or No OA).

Note: Sheet 12 - EXT has been hidden since there were no publications assigned in 2021 to this entity.

Sheet 13 - Paste custom entities

Sheet to enable reporting on OA 2021 figures for custom entities, e.g. a specific TU department. Please refer to the instructions provided in this sheet.

Sheet 13.1 - OA YES-NO Custom entity

Total Open Access for a custom entity, e.g. a specific TU department. Based on the custom input from sheet 13.

Sheet 13.2 - OA UNL Cat Custom entity

Total Open Access for a custom entity, e.g. a specific TU department, specified according to UNL Categories (A, B, C, or No OA). Based on the custom input from sheet 13.

3 METHODOLOGY

3.1 INPUT: collection, cleaning and preparation of data and sources

All necessary data and sources were collected and prepared for the analysis. In order to optimize and maximize the identification of OA status of publications all data, especially key fields needed for matching and identification (ISSN, DOI, UUIDs from Pure) were properly checked and cleaned if necessary.

The following sources were used for collecting the necessary information to make it possible to identify TU Delft Open Access publications and classify these according to the April 2017 UNL/VSNU Framework Monitoring Open Access.

3.1.1 Publication data from CRIS (Pure)

- Export date 6-4-2022
- Peer reviewed journal articles, publication year 2021 (article, comment/letter to the editor, conference article, letter and review article)
- Peer reviewed conference proceedings, publication year 2021 (chapter in book/conference proceedings/edited volume, conference contribution, contribution to conference paper) *

* Only used for internal reporting. UNL reporting is limited to peer reviewed journal articles.

3.1.2 DOAJ Journal list

The Directory of Access Journals (DOAJ) can be used to determine if a publication is Gold OA. According to the UNL Framework all universities must use the same 'frozen' version from 31-12-2021.

- Export date: 31-12-2021
- ISSNs were extracted and cleaned
- Additional ISSNs were identified and added using ISSN tables from ISSN.org and the linking ISSNs (ISSN-L) were determined

3.1.3 Surf OA administration: data from publishers on OA (hybrid) publications

As a results of agreements of Dutch university libraries and publishers regarding Open Access an increasing number of publications in subscription journals are being made Open Access. Reports from publishers on these so called hybrid OA (UNL Category Gold, B) publications are collected nationally. The available list of DOIs has been used to to identify TU Delft (co)authored publications.

- Retrieval date 11-4-2022 and version date: 10-2-2022

3.1.4 TUD OA Fund

This list is exported from the TU Delft Repository. It identifies publications for which the APCs (Article Processing Charges) have been paid through the TU Delft Open Access Fund. These publications are at least classified as Category B (Gold, not DOAJ classified OA/Hybrid):

- Export date: 14-4-2022
- Label OA Fund TU Delft

3.1.5 Institutional Repository list

This list can be used to determine whether a TU Delft publication is at least Green OA:

- Export date: 6-4-2022
- Publication year: 2021
- Visibility: Public - no restriction
- Workflow status: Approved or Validated
- Research output has an association to file
- Open access permission NOT closed, embargoed or restricted

3.1.6 Unpaywall (UPW)

Unpaywall's API (api v2 at <https://api.unpaywall.org/>) was queried using the cleaned DOIs from the Pure publication data (3.1.1). The resulting csv-report was used to identify and classify TU publications. Using calculations following the flow described at the UPW support portal ([link](#)) we were able to find evidence for the following OA categories for a publication:

- Gold: OA publication in an OA journal (UNL Category A)
 - Hybrid: OA in a subscription based journal (UNL Category B)
 - Bronze: accessible on a publisher's journal website, but no identified OA-license
 - Green: available through a trusted repository (UNL Category C)
 - Closed: not OA (UNL Category D, in our report: no-OA)
-
- Retrieval date: 8-4-2022 and 11-4-2022

Notes:

In order to comply with the guidelines drawn up in the UNL Framework we initially only use the UPW Green and Hybrid classifications for our matching. UPW Gold, but not identified using the DOAJ journal list, was then classified as Category B (Gold, not DOAJ Classified).

The output from UPW also uncovered additional ISSNs. These were added to the list of already identified ISSNs and subsequently used to match TU Delft publications with the DOAJ journal list.

Bronze publications are not universally recognized as being sustainable OA and thus have been disregarded for our analysis. The status Closed will already be determined automatically at the end of our analysis and will consist of all publications for which we could find no conclusive OA evidence.

3.1.7 Taverne

The Dutch universities have decided to give open access an extra boost from 2019 by starting a pilot. On the basis of the Taverne Amendment, the publishers' versions of short scientific works can be shared after six months via the university repository if a researcher explicitly has given consent. TU Delft Library shares these publications via the TU Delft Repository. The period of publication after six months applies under the following conditions:

- The publication is funded wholly or partly with Dutch public funds
- The author(s) has/had an employment contract with the TU Delft, which participates in the pilot. Authors can be corresponding- as well as co-authors
- It concerns a short scientific work; this has the length of a scientific article or book chapter in an edited collection.

More information on this initiative can be found at:

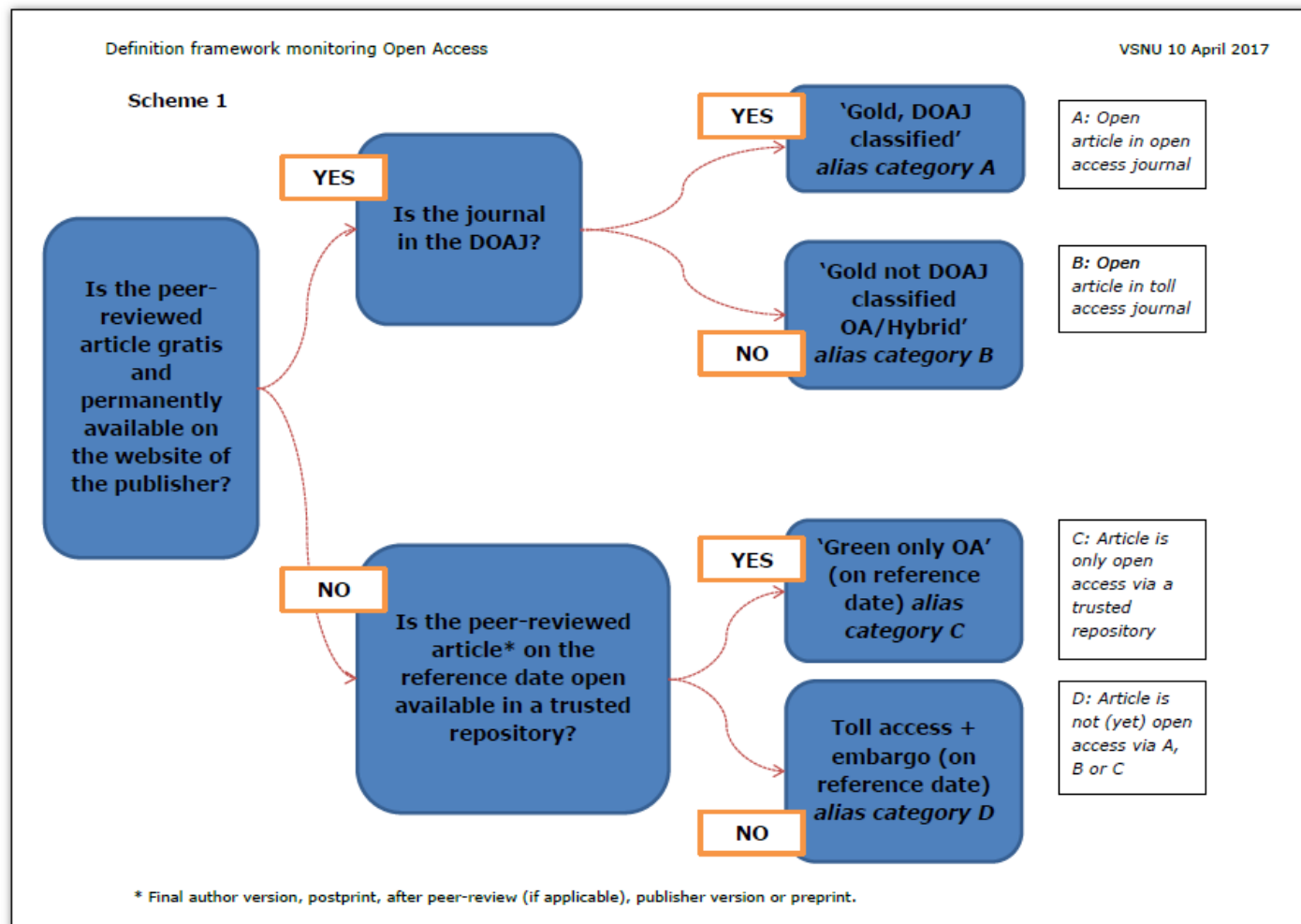
TU Delft: You Share, we take care! <https://www.tudelft.nl/en/library/library-for-researchers/library-for-researchers/publishing-outreach/you-share-we-take-care>

- Retrieved from TU Delft repository searching for "taverne project"
- Retrieval date: 15-4-2022

3.2 MATCHING: matching and determining OA status of publications

The final classification of a TU Delft publication is determined using the April 2017 VSNU* Framework monitoring OA. The matching and classification follows the scheme below:

* former name of Universities of the Netherlands (UNL)



In practice matching and classification is done by matching all TU Delft publications from Pure with all other collected sources using the steps and order described in the following table.

Note:

A publication will only be assigned to one UNL Category: the highest possible category for which we have found evidence!

Step	Source	Match fields	If match is YES: Assigned OA status
1	Directory of Open Access (DOAJ)	ISSN OR Title match DOAJ-Pure	Category A (Gold, DOAJ classified OA)
2	Surf OA administration	DOI	Category B (Gold, not DOAJ classified OA/Hybrid)
3	Unpaywall : Gold/Hybrid status	DOI	Category B (Gold, not DOAJ classified OA/Hybrid)
4	Repository: OA Fund TU Delft	Pure UUID	Category B (Gold, not DOAJ classified OA/Hybrid)
5	Unpaywall: Green status	DOI	Category C (Green only OA)
6	Repository Pure UUID	Pure UUID	Category C (Green only OA)
7	Repository: label Taverne (and no embargo on 1-5-2022)	Pure UUID	Category C (Green only OA)
8	OA status Pure = open*	Open Access status Pure: Open (not A, B, C) manual check	Category C (Green only OA)

* After performing steps 1 through 7 - a limited set of publications with Pure status OA = Open remained unassigned to category A, B, C or non-OA. These were checked manually to determine their specific OA status.