

IOS mailbox



Functional mailbox

Mailbox configuration

For use by:	Students, Employees
Version:	1.0
Date:	08-11-2017
Owner:	SID Lib / ICT

(this page was intentionally left blank)

Configure the functional mailbox on IOS

Use this manual to configure a functional mailbox on an IOS device such as an Ipad or Iphone

Before you begin

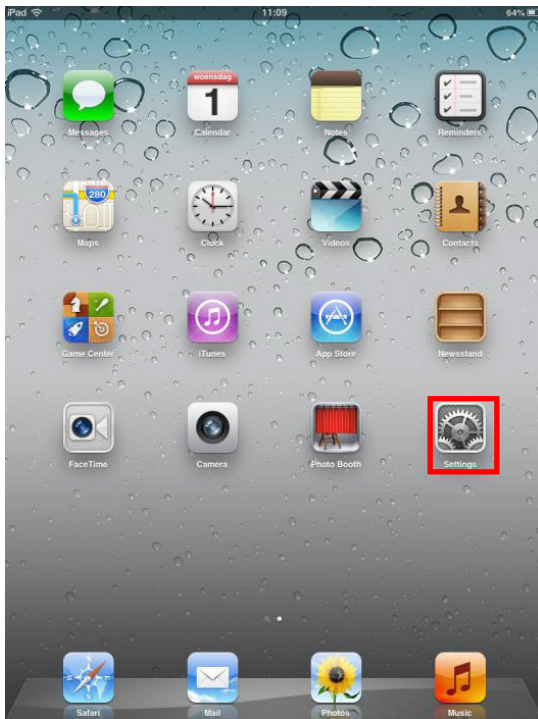
The following instructions are supported by TU Delft and have been tested to be working. We are offering this manual to you as an extra service. In the event you have problems connecting, we advise you to contact your nearest Service Desk, Student IT Desk (SID) or Workstation services (WPS).

This manual describes the setup of a functional mailbox on you're iPad/iPhone. After the setup you can read/send email from the functional mailbox. It is not possible to read the calendar of the functional mailbox.

Description of the steps that have to be taken

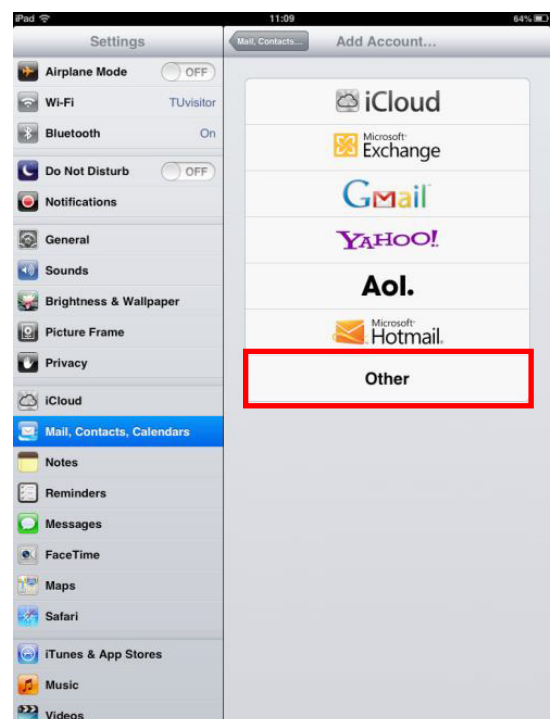
Step 1. From the homescreen go to settings.

Step 2. Go to **Mail, Contacts, Calendars**.

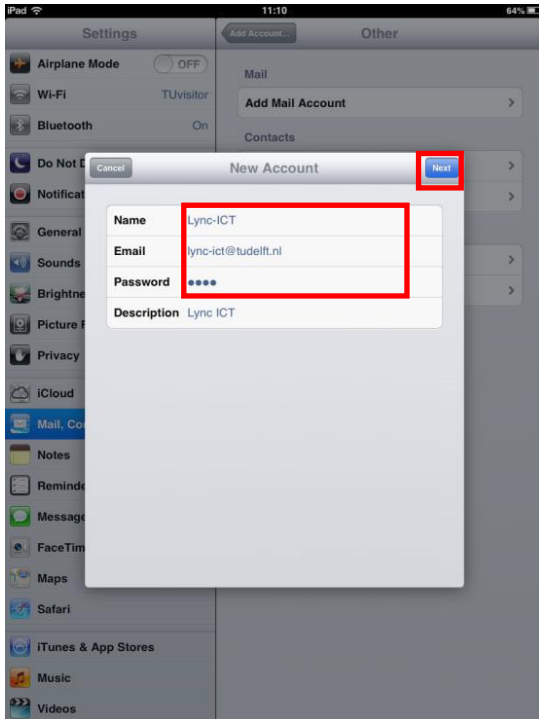


Step 3. Go to **Add Account**

Step 4. Select **Other**

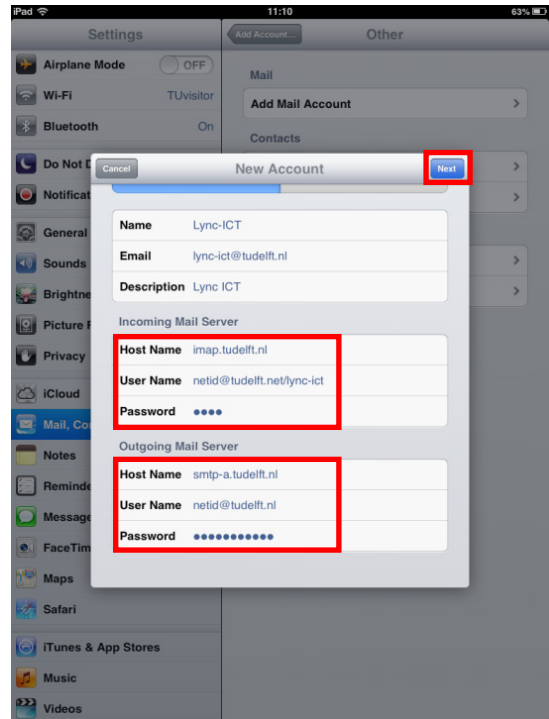


Step 5. Fill in the name and mailaddress.
Fill in password: welkom
Tap **Next**



Step 6. Fill in the following add **Incoming** Mail Server :
Hostname: imap.tudelft.nl
Username: netid@tudelft.net/mailbox
for example johndoe@tudelft.net\lync-ict
Password: Your NetID Password

Fill in the following add **Outgoing** Mail Server :
Hostname: smtp-a.tudelft.nl
Username: Netid@tudelft.net
Password: Your NetID Password



Step 7. When ready tap on **next** and **finished**