

OpenVPN

Windows VPN Connection for Externals



For use by:	Externals
Version:	1.0
Date:	22-1-2016
Owner:	SID-LIB/SSC ICT

(this page was intentionally left blank)

Installing OpenVPN for externals

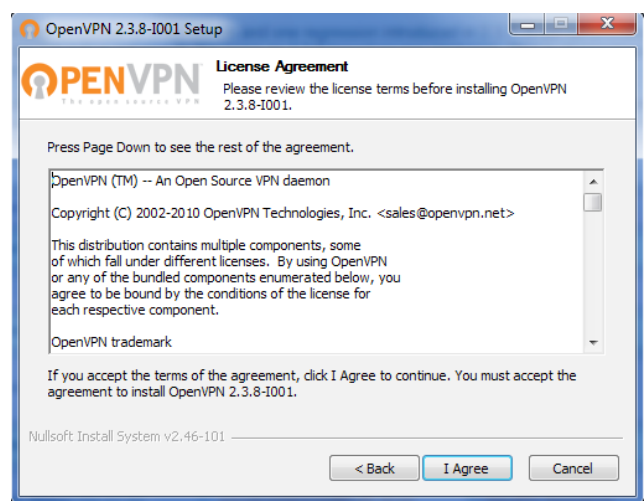
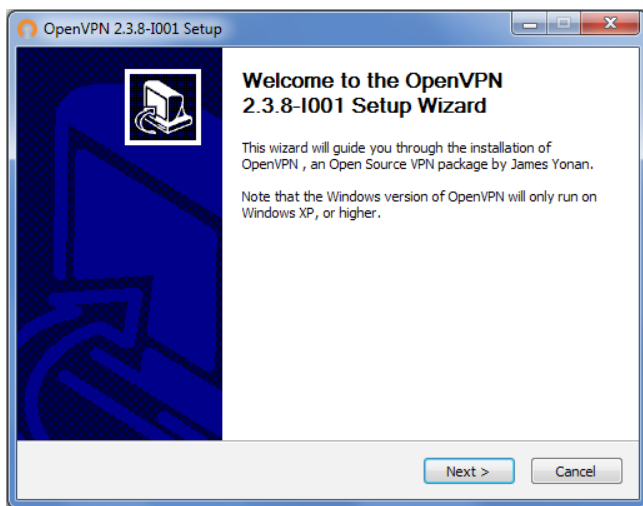
The following instructions are supported by TU Delft and have been tested to be working. We are offering this manual to you as an extra service. In the event you have a different configuration or version of Windows to the one described here and you have problems connecting, we advise you to contact your nearest Service Desk, Student IT Desk (SID) or Workstation services (WPS).

OpenVPN for Externals is an environment that is specifically setup for external TUD persons as a method for using a public network, such as the Internet, to access systems that are usually protected by a firewall both from inside the TU Delft and from outside it. You can apply for access to this environment via the Service Desk in your building. Below you can read the instructions how to connect through OpenVPN.

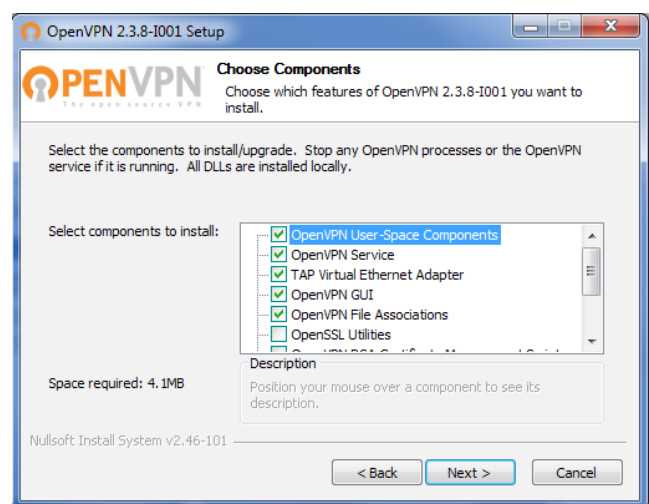
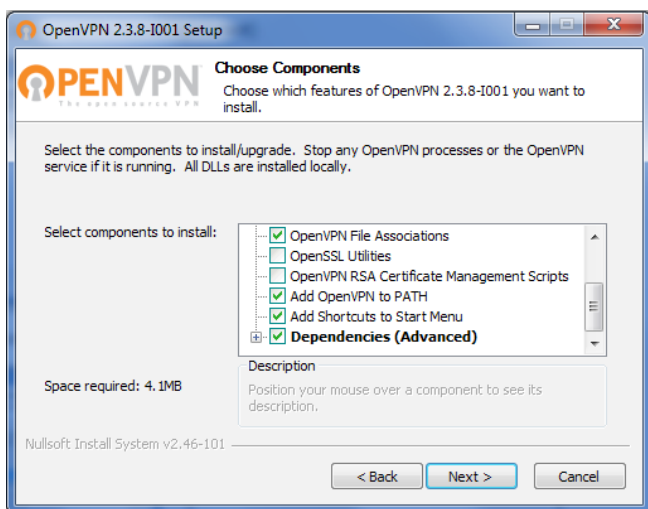
Step 1. Download the Windows installer from:
<http://openvpn.net/index.php/open-source/downloads.html>

Installer (32-bit), Windows XP	openvpn-install-2.3-1001-i686.exe
Installer (64-bit), Windows XP	openvpn-install-2.3.8-1001-x86_64.exe

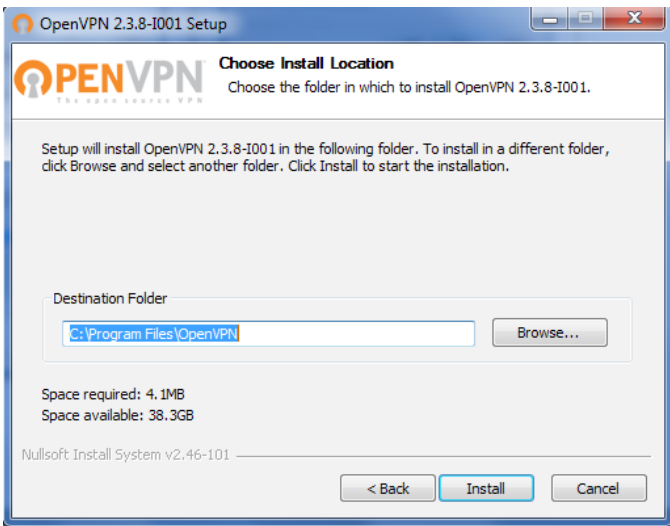
Step 2. Launch the installer.. (and accept the license agreement)



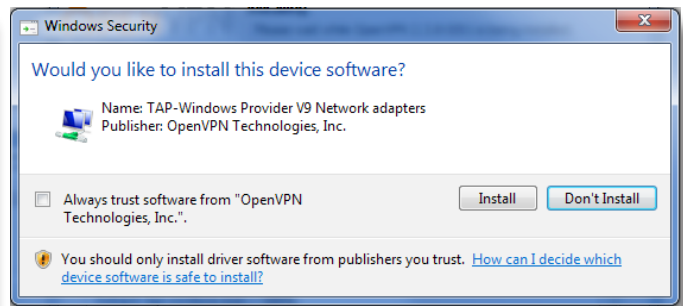
Step 3. Leave the components checked as default.



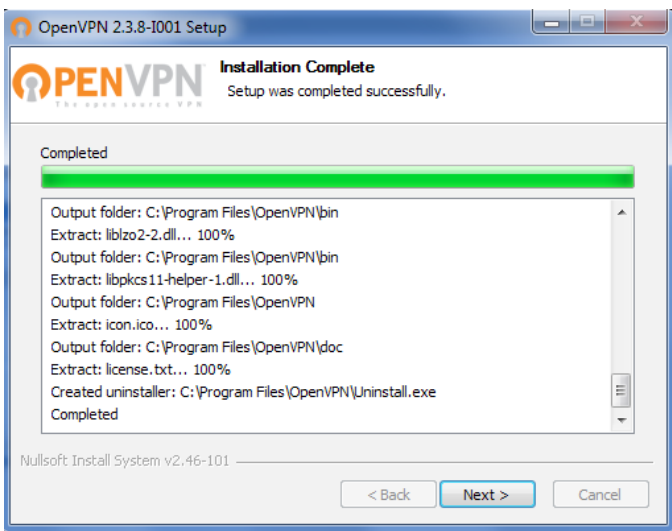
Step 4. Accept the default install location



Step 5. Allow it also to install the TAP driver

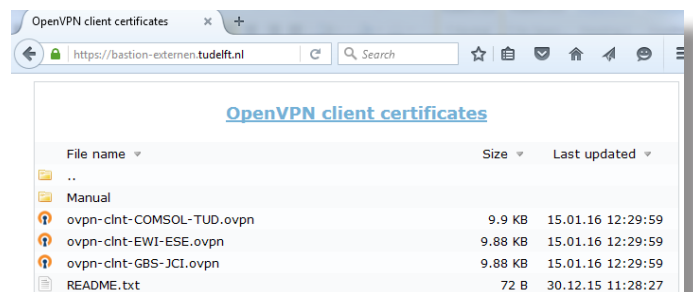
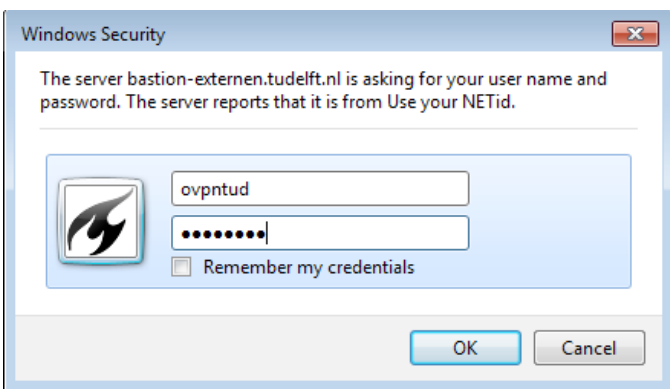


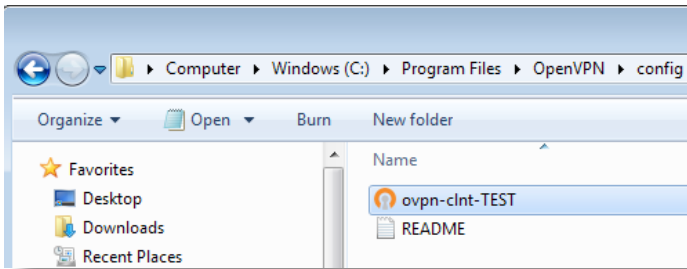
Step 6. after installation is complete you should see...



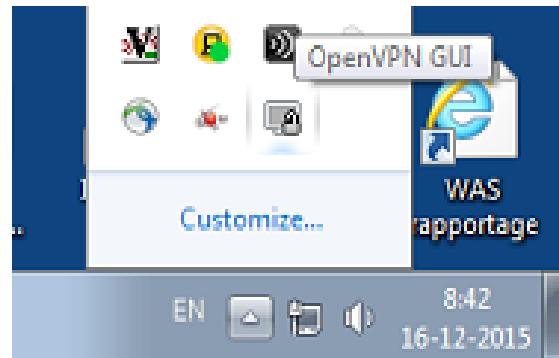
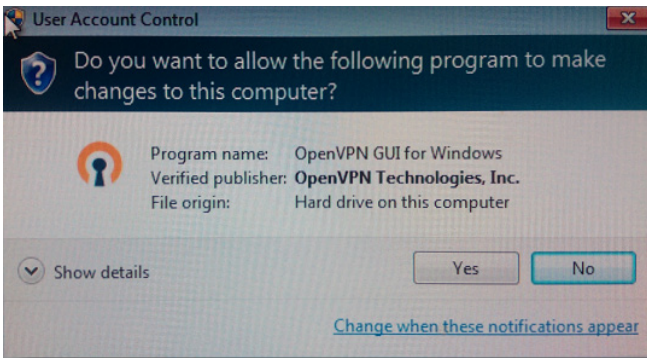
Step 7. Download the OpenVPN security certificate with client configuration from the location you received in the mail, together with your login credentials. <http://bastion-externen.tudelft.nl>

Download the certificate to: C:\Program Files\OpenVPN\config\ovpn-clnt-xxx.ovpn (as administrator and make sure the extension is .ovpn).

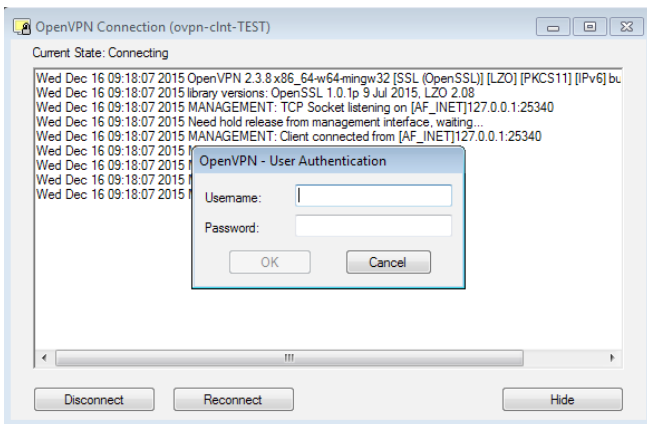




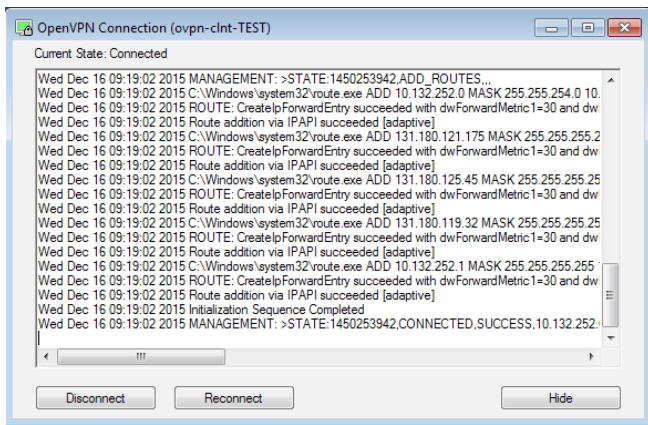
Step 8. Launch the OpenVPN GUI... (as Administrator) and open the GUI in the taskbar



Step 9. and select "connect. If all's well then the OpenVPN icon in the taskbar will change to "green" and a status announcement will appear



Step 10. check connection status



And, if needed, setup your connecton to the desired server with for instance SSH or RDP