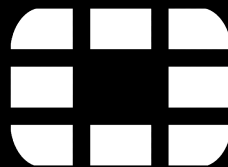




# Windows 10

FortiClient  
VPN Connection



For use by:	Students, employees and guests
Version:	1.0
Date:	19-02-2020
Owner:	SID Library

*(this page was intentionally left blank)*

# Installing VPN on Windows 10

## Installing VPN using FortiClient VPN on your Windows 10 system

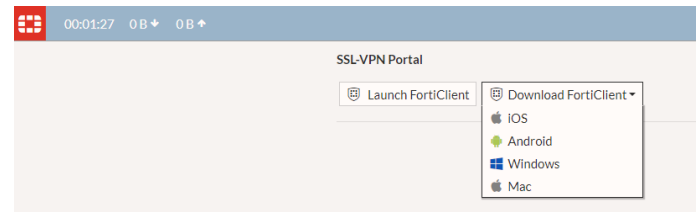
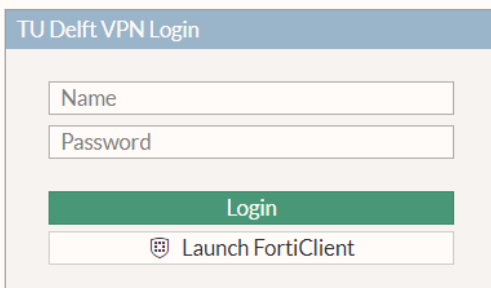
### Before you begin

The following instruction is supported by the TU Delft and has been tested to be working. However, we offer this manual to you as an extra service, so in case you have a configuration or version of Windows other than the one described here and you have problems establishing a connection, neither ICT nor a Servicepoint will be able to help you to make a successful connection.

### Installing the FortiClient app

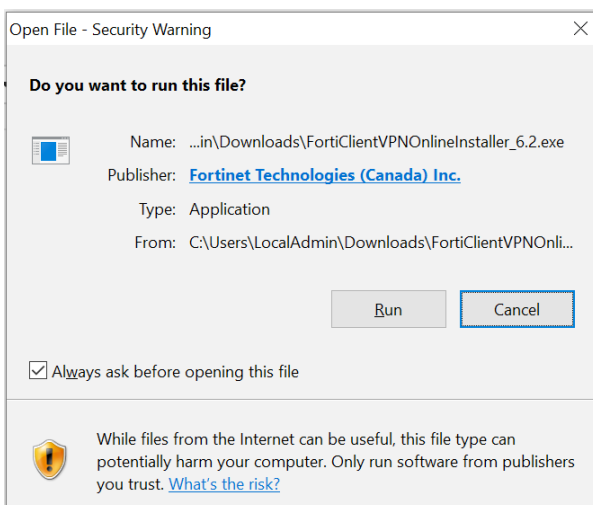
Step 1: Open Internet Explorer, Chrome or Firefox and go to <http://vpn.tudelft.nl> Log in with your NetID and password.

Step 2: Select your operating system (in this case: Windows)

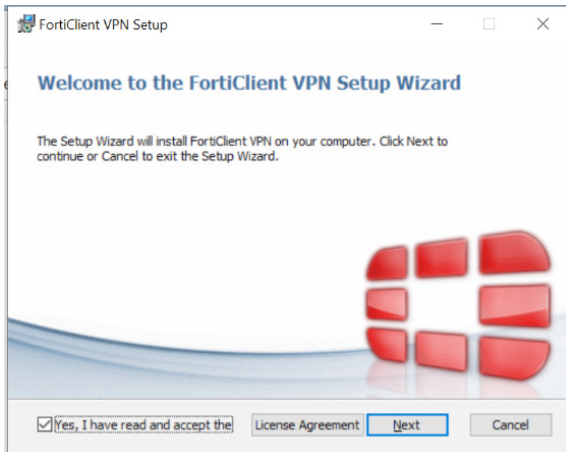


Step 3a: When asked: click on RUN to download and run the software.

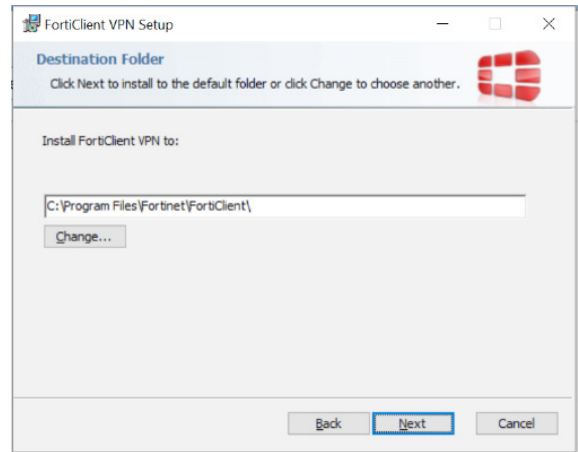
Step 3b: Otherwise, download the software to your computer and then, click on **FortiClientMiniSetup-Windows-x64-Enterprise-6.2.3.exe** to start the installer.



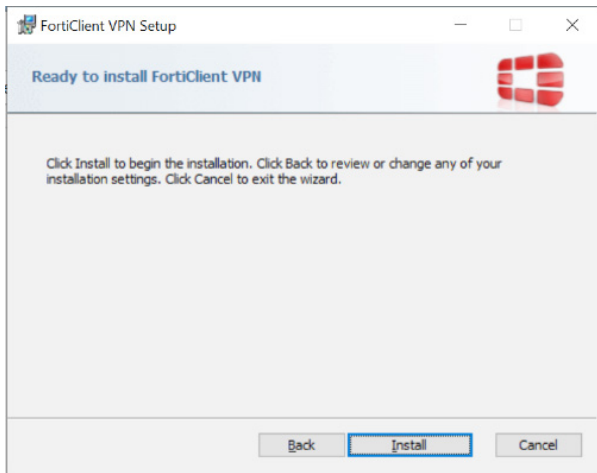
Step 4: Click on 'Yes, I have read and accept the License Agreement' and select 'Next'.



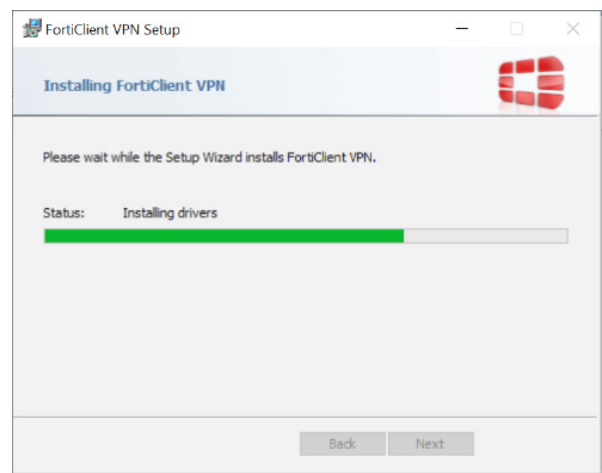
Step 5: Choose a destination folder for the installation, and select 'Next'.



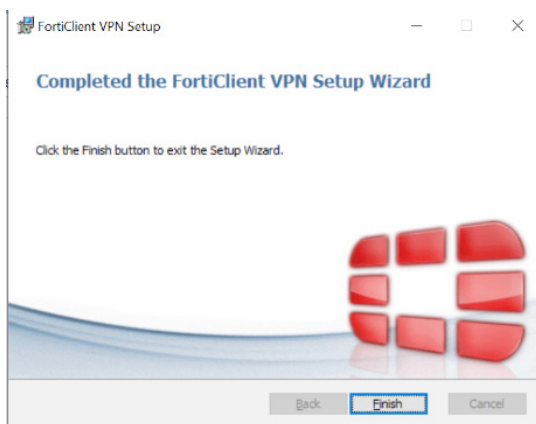
Step 6: Select 'Install' to start the installation.



Step 7: Please wait...

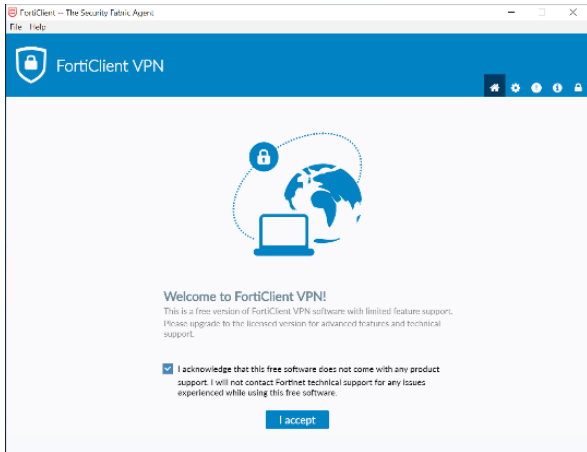


Step 8: When the installation has finished, click 'Finish'.

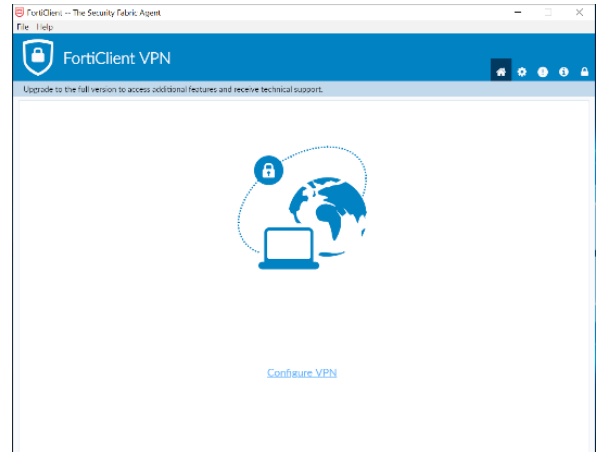


## Configuring the VPN Client

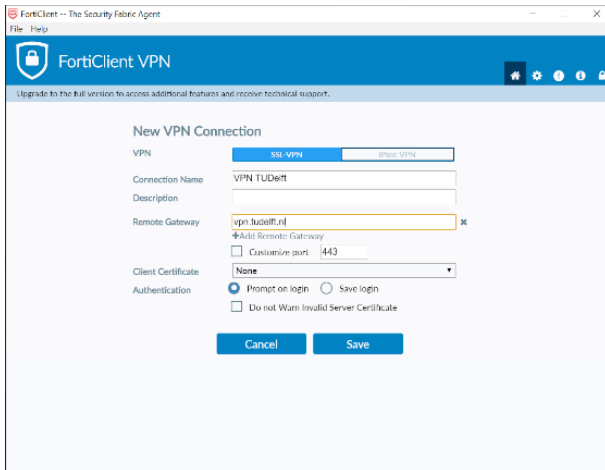
Step 1: Open the FortiClient app. Select the 'I acknowledge' checkbox and click 'I accept'.



Step 2: Select 'Configure VPN'.

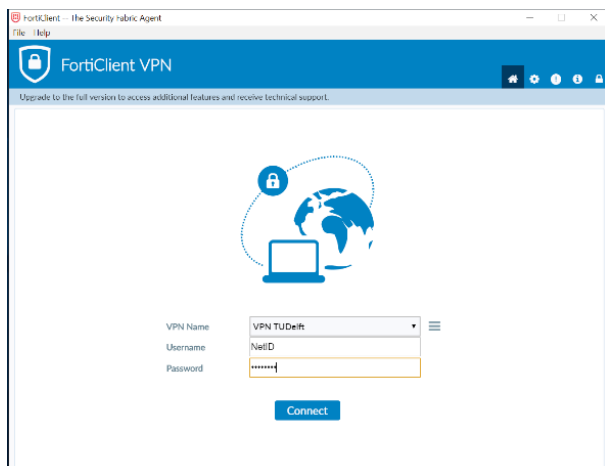


Step 3: Select 'SSL-VPN'. Choose a logical connection name, e.g. VPN TUDelft. Enter 'vpn.tudelft.nl' as the remote gateway and select 'Save'.



## Starting a VPN connection

Step 1: Open the FortiClient app. Use your NetID as username and enter your password. Then select 'Connect'.



Step 2: You will see the popup 'Connected to VPN TUDelft'.

