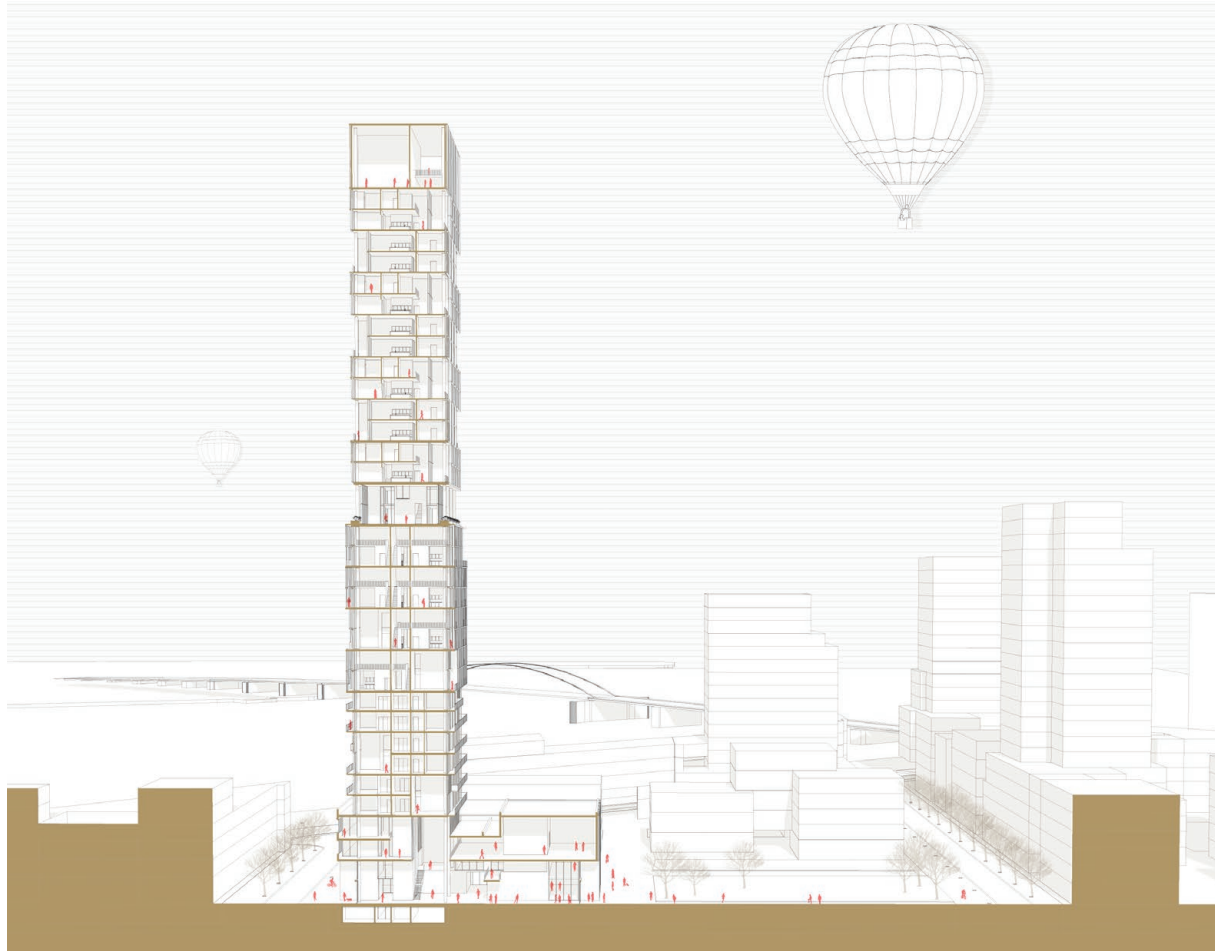


High-Rise Culture

MSc2 Interdisciplinary Design Studio

Section Form, Space & Type [Public Building + Dwelling + Form Studies]



The Sky Gallery. An Exploration of Synchronous Verticality by Jonathan Connerney
Studio High-Rise Culture, Spring Semester 2019-2020

Tutors

Paul Kuitenbrouwer (Public Building)
Olv Klijn (Dwelling)
Peter Koorstra (Form Studies)

Code	AR2FST010
Credits	15 ECTS
Location	Sluisbuurt, Amsterdam
Excursion	To site (provided the conditions related to Covid-19 will allow us).
Costs	-

**Only for MSc2 projects*

Project type Other

Approved Master 2 Yes
Architecture design
project

The studio HIGH-RISE CULTURE - offered by the section Form, Space and Type - seeks to address the ongoing urban densification by developing new typologies that will inject our cities with vibrant urban spaces, open and accessible, diverse and future-proof.

Due to issues of sustainability, the current housing crisis and changing lifestyles there is an urgency to further densify our cities. A new wave of high-rises is being constructed, not only in the high-speed urbanizing economies of Asia and Africa, but also in the ageing cities on the European Continent. But what could be a desirable approach to this new moment in city construction? Can high-rise housing be combined with collective and public programmes in order to create a vertical neighbourhood? What sort of affordable housing typologies are possible and desirable?

What sort of city can we create with new open forms, from the street level and collective spaces that invite chance encounter, to the privacy of generous and protective interiors of your private apartment?

The theoretical starting-point is provided by topical studies on urban planning and culture: Richard Sennett's *Building and Dwelling*.

Ethics for the City (2018), in which he proposes the idea of five 'open forms' for socially mixed and accessible cities, and Richard Florida's *The New Urban Crisis* (2017), in which a condition of acceleration and competition between cities and citizens is described.

The section Form, Space and Type contains the groups of Public Building, Dwelling and Form Studies. Regular tutoring in the HIGH-RISE CULTURE studio is performed by Public Building and Dwelling.

Form Studies will use the physical model as a research tool to explore and discover the possibilities of explicit expression. Central themes are perception, composition and material expression (provided the conditions related to Covid-19 will allow us to perform model making in BK City again in Q4). Moreover, Form Studies will focus on ways of developing your storyline.

The MSc2 studio HIGH-RISE CULTURE is curiosity-driven and combines speculative architectural design with experiments in urban living. Exploratory workshops are combined with research assignments.