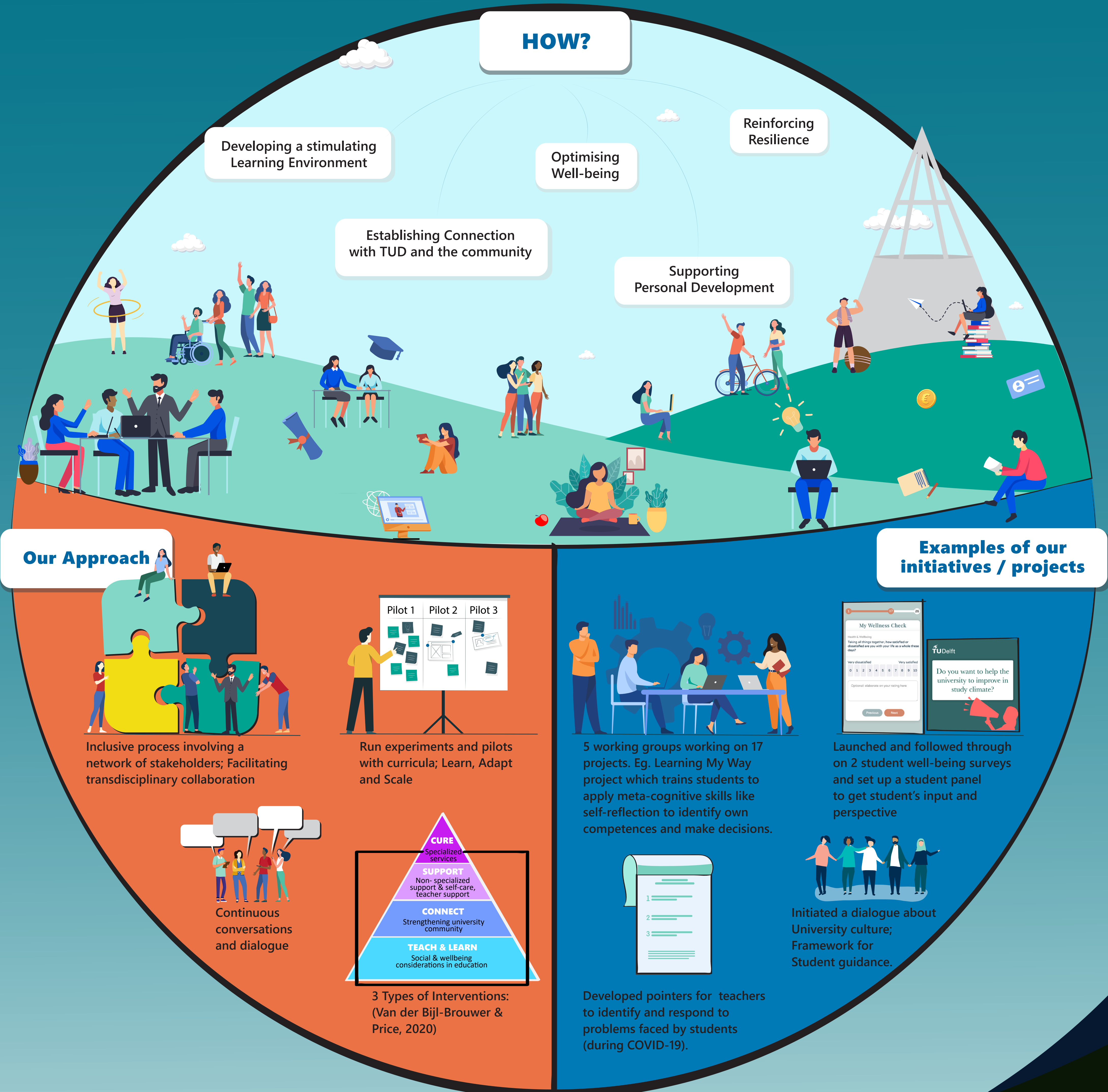


STUDY CLIMATE PROGRAM

The Study Climate Program is a TU Delft-wide effort to further enhance student success by focusing on students' growth and wellbeing. The program aims to broaden the curricula and culture in order to catalyse the transition to an engineering education that leverages the full range of human potential: from the technical to the social and personal domains. This facilitates a supportive environment that allows students to discover the (full spectrum of) knowledge, skills and mind-sets they need to study effectively and become valued, autonomous and responsible TU Delft engineers.



For more details contact Stella van der Meulen, Program Manager (S.J.vanderMeulen@tudelft.nl) or wellbeing@tudelft.nl